



Benham & Reeves

Park Street, Fulham, SW6

£525 per week, £2,275 per month + fees

🛏 Studio 🚿 1 Bathroom 🛋 Unfurnished

A stylish Manhattan studio apartment set in a sought-after development close to the amenities of Fulham and Chelsea. is located within walking distance of Imperial Wharf Overground station, which runs a good service around London.

Please [click here](#) for full detail

Property features

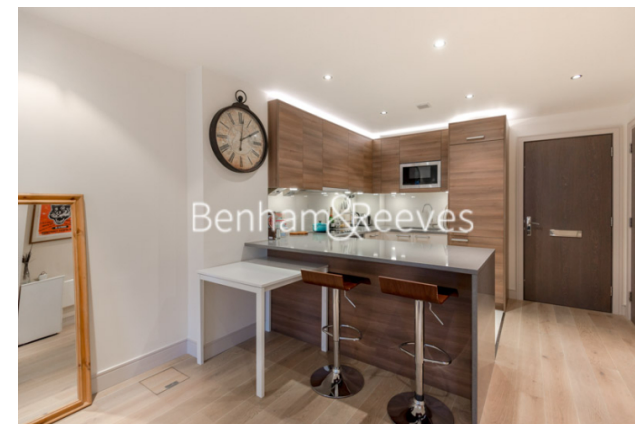
Manhattan Studio | 1 Bathroom | Reception | Unfurnished | Fitted Kitchen | EPC-C | Private Terrace | Swimming Pool and Gym | Nearby Imperial Wharf Station

For more information about this property,
please call our Fulham branch on

020 7348 7620

Redress & Client Money Protection :

Benham and Reeves are members of The Property Ombudsman redress scheme and have Client Money protection with ARLA Propertymark. You can find more information on our website at <https://www.benhams.com/membership/>



Benham&Reeves

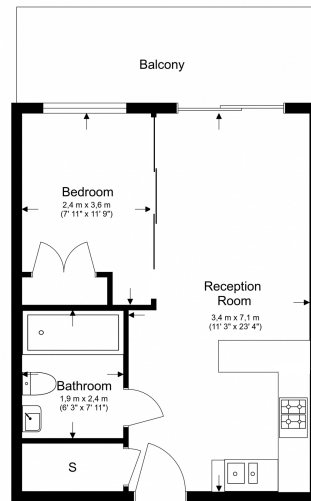


Park Street, Fulham, SW6

£525 per week, £2,275 per month + fees

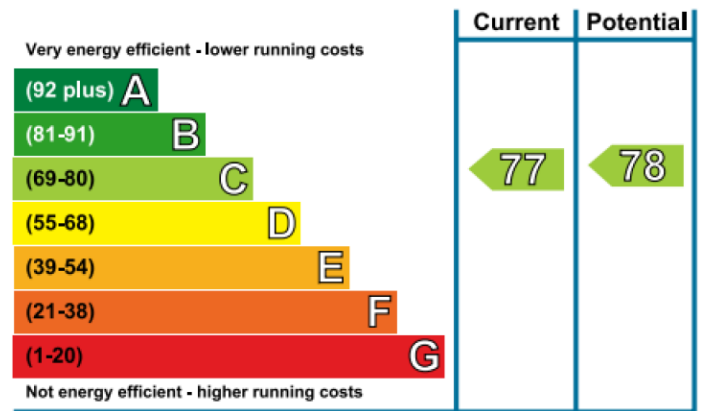
www.benhams.com

First Floor
Total Gross Internal Area
37.7 Sq/m - 405 Sq/ft



Floor Plan measurements are approximate and are for illustrative purposes only. While we do not doubt the floor plans accuracy, we make no guarantee, warranty or representation as to the accuracy and completeness of the floor plan.

Energy Efficiency Rating



London branches open six days a week Mon - Sat

Canary Wharf | City | Colindale | Dartmouth Park | Ealing | Fulham
Hammersmith | Hampstead | Highgate | Hyde Park | Kensington | Kew
Knightsbridge | Nine Elms | Shoreditch | Southall | Surrey Quays
Wapping | Wembley | White City | Woolwich

International offices

China | Hong Kong SAR | India | Israel | Malaysia | Middle East | Pakistan
Qatar | Singapore | South Africa | Thailand | Turkey



Benham & Reeves