



Benham & Reeves

**Thurstan Street, Fulham, SW6**

£800 per week, £3,467 per month + fees

 2 Bedrooms    2 Bathrooms    Furnished

A stunning 2nd floor apartment, with excellent amenities and underground parking, situated in a landmark St George Landmark, well positioned for Imperial Wharf station.

Please [click here](#) for full detail

## Property features

**2 Bedrooms | 2 Bathrooms | Reception | Furnished | Fitted Kitchen | EPC-B | Gym and Swimming Pool | Underground Parking | Nearby Imperial Wharf Tube Station**

For more information about this property,  
please call our Fulham branch on

**020 7348 7620**

Redress & Client Money Protection :

Benham and Reeves are members of The Property Ombudsman redress scheme and have Client Money protection with ARLA Propertymark. You can find more information on our website at <https://www.benhamandreeves.com/membership/>



Benham&Reeves

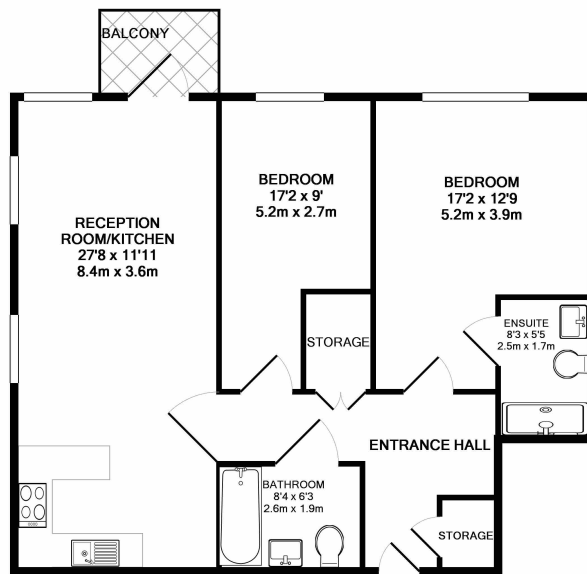




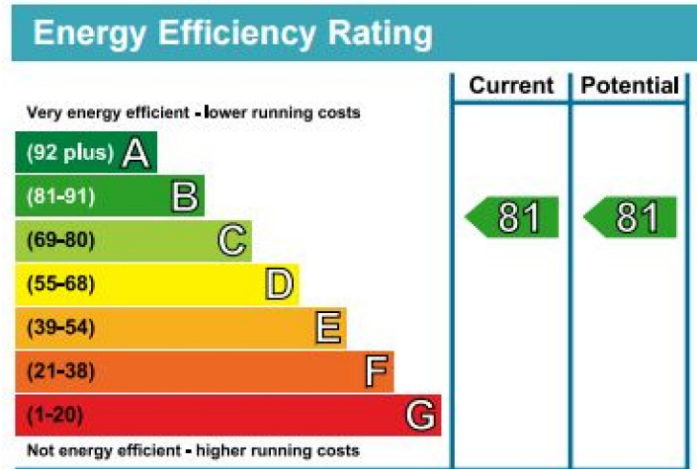
# Thurstan Street, Fulham, SW6

£800 per week, £3,467 per month + fees

www.benhams.com



TOTAL APPROX. FLOOR AREA 889 SQ.FT. (82.6 SQ.M.)  
Whilst every attempt has been made to ensure the accuracy of the floor plan contained here, measurements of doors, windows, rooms and any other items are approximate and no responsibility is taken for any error, omission, or mis-statement. This plan is for illustrative purposes only and should be used as such by any prospective purchaser. The services, systems and appliances shown have not been tested and no guarantee as to their operability or efficiency can be given  
Made with Metropix ©2017



## London branches open six days a week Mon - Sat

Canary Wharf | City | Colindale | Dartmouth Park | Ealing | Fulham  
Hammersmith | Hampstead | Highgate | Hyde Park | Kensington | Kew  
Knightsbridge | Nine Elms | Shoreditch | Southall | Surrey Quays  
Wapping | Wembley | White City | Woolwich

## International offices

China | Hong Kong SAR | India | Indonesia | Qatar | Malaysia | Middle East | Pakistan  
Singapore | South Africa | Thailand | Turkey



Benham & Reeves