



Benham & Reeves

Imperial Wharf, Fulham, SW6

£692 per week, £2,999 per month + fees

 2 Bedrooms  2 Bathrooms  Furnished

A spacious 7th floor apartment set in a sought-after riverside development close to the amenities of Fulham. The apartment is located a stone's throw away from Imperial Wharf Overground Station offering excellent connectivity.

Please [click here](#) for full detail

Property features

2 Bedrooms | 2 Bathrooms | Reception | Furnished | Fitted Kitchen | EPC-C | Balcony | 24 Hour Concierge | Nearby Imperial Wharf Station

For more information about this property,
please call our Fulham branch on

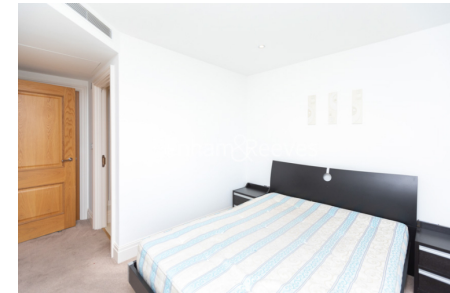
020 7348 7620

Redress & Client Money Protection :

Benham and Reeves are members of The Property Ombudsman redress scheme and have Client Money protection with ARLA Propertymark. You can find more information on our website at <https://www.benhamandreeves.com/membership/>



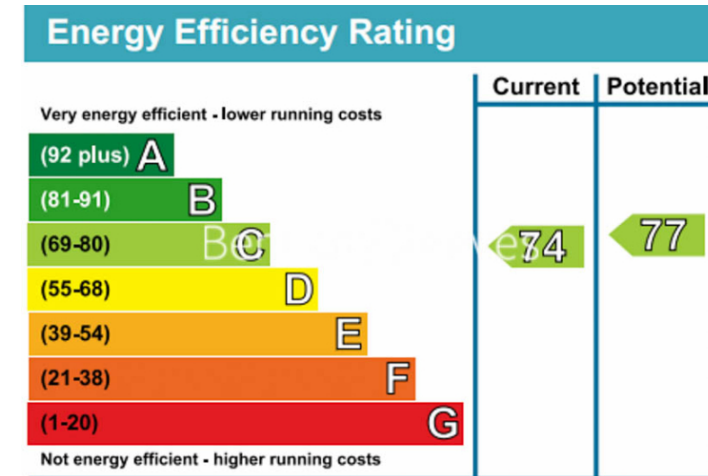
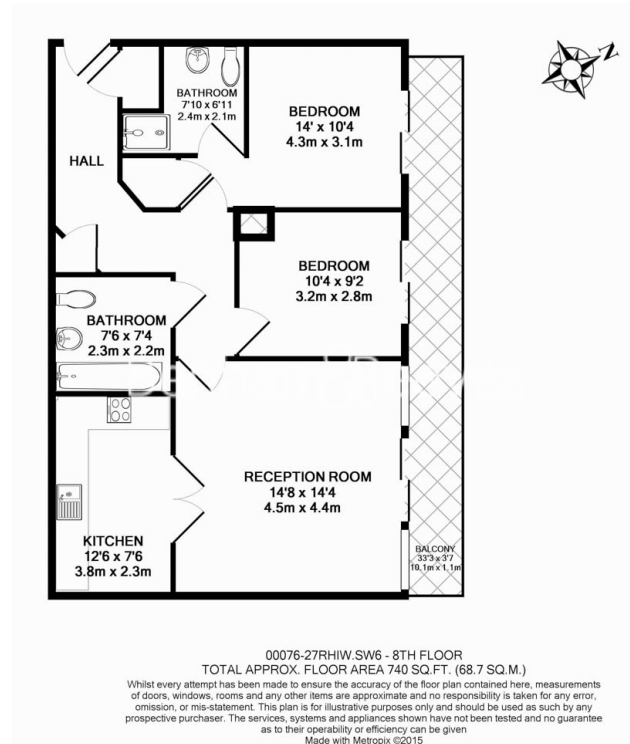
Benham & Reeves



Imperial Wharf, Fulham, SW6

£692 per week, £2,999 per month + fees

www.benhams.com



London branches open six days a week Mon - Sat

Canary Wharf | City | Colindale | Dartmouth Park | Ealing | Fulham
Hammersmith | Hampstead | Highgate | Hyde Park | Kensington | Kew
Knightsbridge | Nine Elms | Shoreditch | Southall | Surrey Quays
Wapping | Wembley | White City | Woolwich

International offices

China | Hong Kong SAR | India | Indonesia | Qatar | Malaysia | Middle East | Pakistan
Singapore | South Africa | Thailand | Turkey



Benham & Reeves