



Benham & Reeves

Lensbury Avenue, Fulham, SW6

£947 per week, £4,104 per month + fees

 3 Bedrooms  2 Bathrooms  Furnished

A contemporary large, air-conditioned apartment situated within a sought-after riverside development close to the amenities of Fulham and moments from Imperial Wharf Overground Station

Please [click here](#) for full detail

Property features

3 Bedrooms | 2 Bathrooms | Reception | Furnished | Fitted Kitchen | EPC-C | Access to Gym facilities | 24hr Concierge | Lifts to all floor | Nearby Imperial Wharf Tube Station

For more information about this property,
please call our Fulham branch on

020 7348 7620

Redress & Client Money Protection :

Benham and Reeves are members of The Property Ombudsman redress scheme and have Client Money protection with ARLA Propertymark. You can find more information on our website at <https://www.benhams.com/membership/>



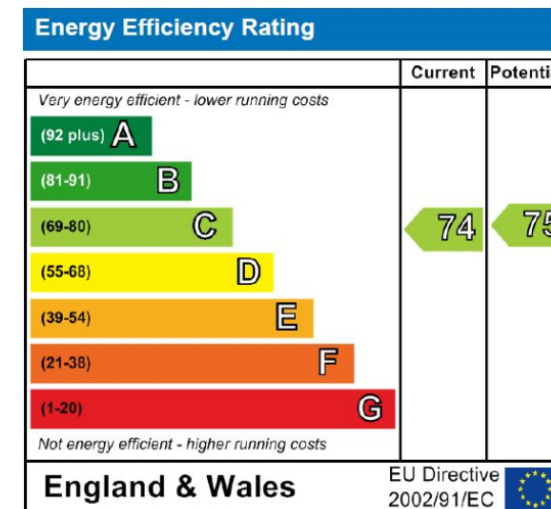
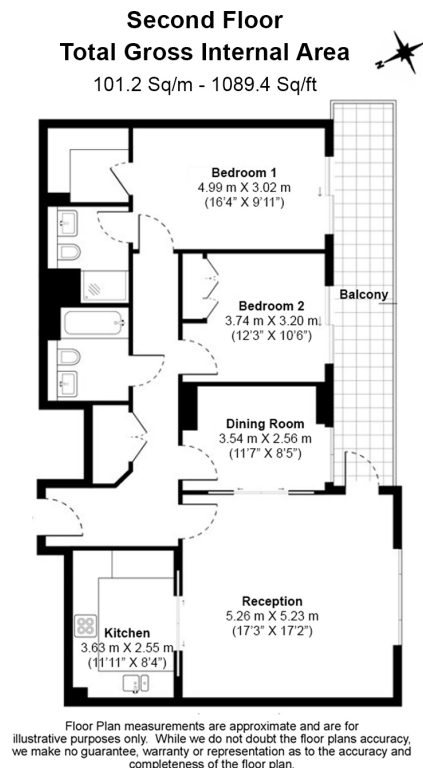
Benham & Reeves



Lensbury Avenue, Fulham, SW6

£947 per week, £4,104 per month + fees

www.benhams.com



London branches open six days a week Mon - Sat

Canary Wharf | City | Colindale | Dartmouth Park | Ealing | Fulham
Hammersmith | Hampstead | Highgate | Hyde Park | Kensington | Kew
Knightsbridge | Nine Elms | Shoreditch | Southall | Surrey Quays
Wapping | Wembley | White City | Woolwich

International offices

China | Hong Kong SAR | India | Israel | Malaysia | Middle East | Pakistan
Qatar | Singapore | South Africa | Thailand | Turkey



Benham & Reeves