



Benham & Reeves

Park Street, Fulham, SW6

£775 per week, £3,358 per month + fees

 2 Bedrooms  2 Bathrooms  Furnished

A BRAND NEW two bedroom apartment set within the PRESTIGIOUS Chelsea Creek development. The property features FLOOR-TO-CEILING WINDOWS, a PRIVATE TERRACE and access to EXCLUSIVE AMENITIES.

Please [click here](#) for full detail

Property features

2 Bedrooms | 2 Bathrooms | Reception | Furnished | Fitted Kitchen | EPC-B | Underground Parking | Private Balcony | Nearby Imperial Wharf Station

For more information about this property,
please call our Fulham branch on

020 7348 7620



Redress & Client Money Protection :
Benham and Reeves are members of The Property Ombudsman redress scheme and have Client Money protection with ARLA Propertymark.
You can find more information on our website at <https://www.benhamandreeves.com/membership/>

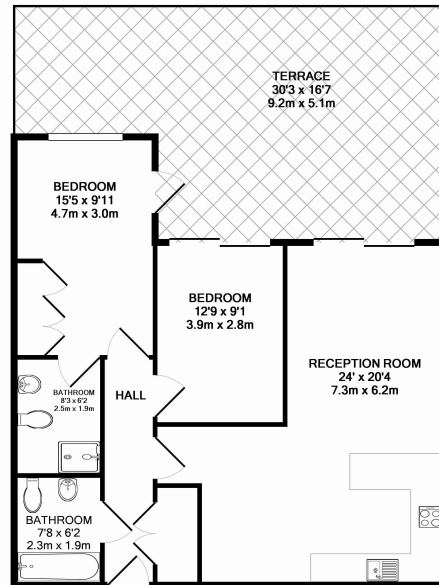
Benham & Reeves



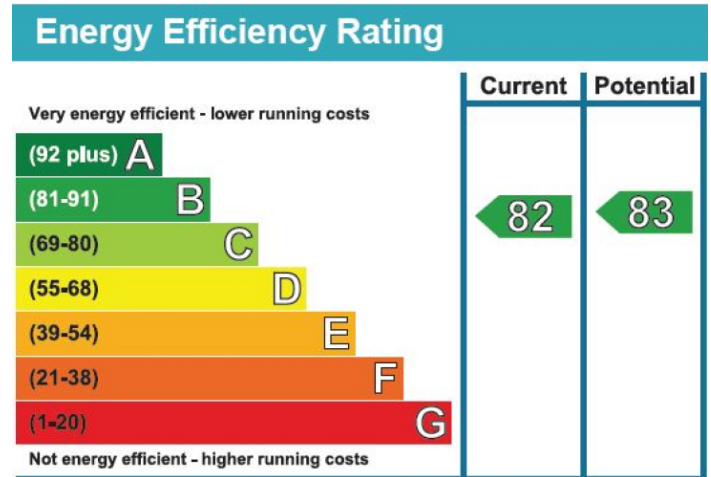
Park Street, Fulham, SW6

£775 per week, £3,358 per month + fees

www.benhams.com



DOULTON HOUSE - IMPERIAL WHARF
TOTAL APPROX. FLOOR AREA 799 SQ.FT. (74.2 SQ.M.)
Whilst every attempt has been made to ensure the accuracy of the floor plan contained here, measurements of doors, windows, rooms and any other items are approximate and no responsibility is taken for any error, omission, or mis-statement. This plan is for illustrative purposes only and should be used as such by any prospective purchaser. The services, systems and appliances shown have not been tested and no guarantee as to their operability or efficiency can be given.
Made with Metropix ©2014



London branches open six days a week Mon - Sat

Canary Wharf | City | Colindale | Dartmouth Park | Ealing | Fulham
Hammersmith | Hampstead | Highgate | Hyde Park | Kensington | Kew
Knightsbridge | Nine Elms | Shoreditch | Southall | Surrey Quays
Wapping | Wembley | White City | Woolwich

International offices

China | Hong Kong SAR | India | Indonesia | Qatar | Malaysia | Middle East |
Singapore | South Africa | Thailand | Turkey



Benham & Reeves