



Benham & Reeves

Electric Boulevard, Battersea Power Station, SW11

£650 per week, £2,817 per month + fees

 1 Bedroom  1 Bathroom  Furnished

A bright Manhattan studio apartment located in the newest phase of one of the most sought-after developments on the Thames. A brief walk from Battersea Power Station tube station (Northern Line) and River Boat services.

Please [click here](#) for full detail

Property features

Manhattan Studio | Separate sleeping area | Air cooling | Winter garden | Furnished | EPC-B | 24 hour concierge | Residence gym | Residence sky lounge | Battersea Power Station Tube

For more information about this property, please call our Nine Elms branch on

020 3282 3700

Redress & Client Money Protection :

Benham and Reeves are members of The Property Ombudsman redress scheme and have Client Money protection with ARLA Propertymark. You can find more information on our website at <https://www.benhams.com/membership/>



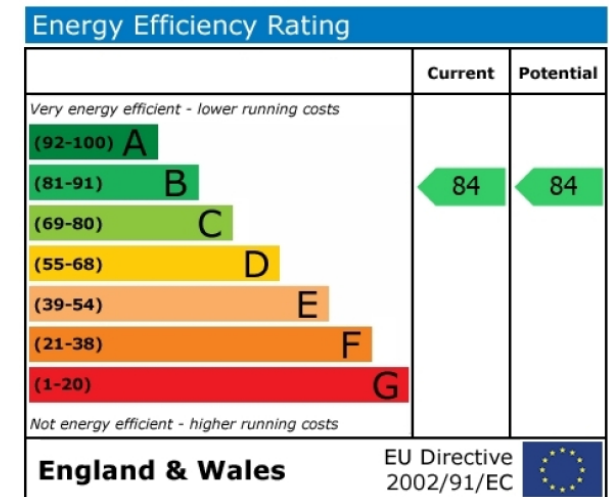
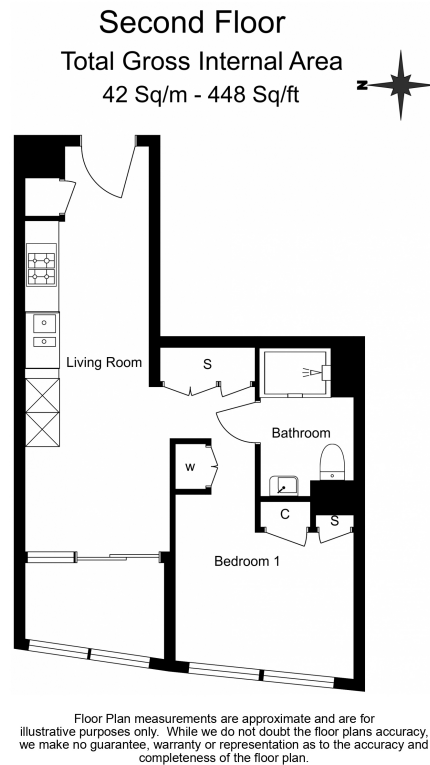
Benham & Reeves



Electric Boulevard, Battersea Power Station, SW11

www.benhams.com

£650 per week, £2,817 per month + fees



London branches open six days a week Mon - Sat

Canary Wharf | City | Colindale | Dartmouth Park | Ealing | Fulham
Hammersmith | Hampstead | Highgate | Hyde Park | Kensington | Kew
Knightsbridge | Nine Elms | Shoreditch | Southall | Surrey Quays
Wapping | Wembley | White City | Woolwich

International offices

China | Hong Kong SAR | India | Israel | Malaysia | Middle East | Pakistan
Qatar | Singapore | South Africa | Thailand | Turkey



Benham & Reeves