



Benham & Reeves

**Central Avenue, Fulham, SW6**

£1,200 per week, £5,200 per month + fees

 4 Bedrooms    3 Bathrooms    Furnished

A stunning large apartment with beautiful views of the River Thames, situated in a sought-after development a brief walk from Imperial Wharf Overground station with excellent travel links around London.

Please [click here](#) for full detail

## Property features

**Contemporary split level 4 bedroom unfurnished apartment | 3 Chic shower rooms (1 ensuite), bathroom and a WC | High spec kitchen with Miele appliances and fabulous dining | 4 Double bedrooms with built-in wardrobes | Spacious terrace with seating space and a view of the pier | EPC-B | Elegant receptions with high arching ceilings and windows | Landscaped communal courtyard and easy access to the Thames | Approx. 1602 Sq Ft. | Nearby Imperial Wharf station**

For more information about this property,  
please call our Fulham branch on

**020 7348 7620**

Redress & Client Money Protection :

Benham and Reeves are members of The Property Ombudsman redress scheme and have Client Money protection with ARLA Propertymark. You can find more information on our website at <https://www.benhamandreeves.com/membership/>



**Benham & Reeves**

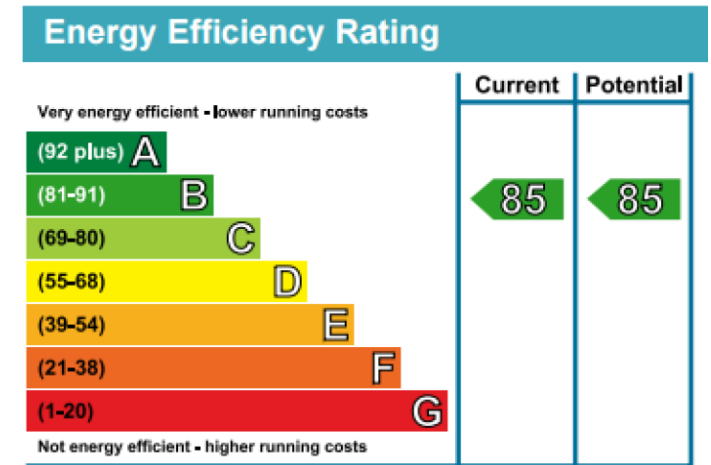
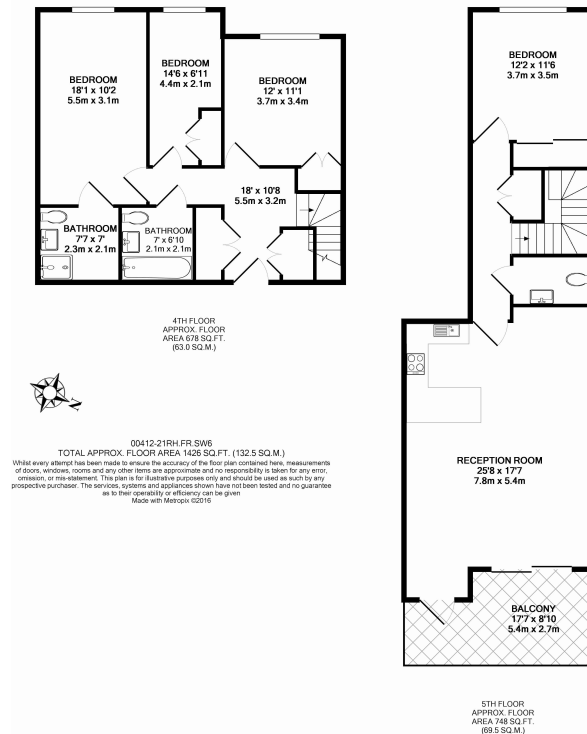




# Central Avenue, Fulham, SW6

£1,200 per week, £5,200 per month + fees

www.benhams.com



## London branches open six days a week Mon - Sat

Canary Wharf | City | Colindale | Dartmouth Park | Ealing | Fulham  
Hammersmith | Hampstead | Highgate | Hyde Park | Kensington | Kew  
Knightsbridge | Nine Elms | Shoreditch | Southall | Surrey Quays  
Wapping | Wembley | White City | Woolwich

## International offices

China | Hong Kong SAR | India | Indonesia | Qatar | Malaysia | Middle East | Pakistan  
Singapore | South Africa | Thailand | Turkey



Benham & Reeves