



Benham & Reeves

Lensbury Avenue, Fulham, SW6

£981 per week, £4,250 per month + fees

 3 Bedrooms  2 Bathrooms 
Furnished/UnFurnished

Parking included: A chic apartment set in the sought- after Imperial Wharf development in Fulham. Featuring contemporary décor, the property is offered on a furnished basis. Imperial Wharf Overground station is located at a stone's throw from the property

Please [click here](#) for full detail

Property features

3 Bedrooms | 2 Bathrooms | Reception | Furnished | Fitted Kitchen | EPC-C | Tbc Sq Ft | Residents' Gym | Wood Floors | Nearby Imperial Wharf Station

For more information about this property,
please call our Fulham branch on

020 7348 7620

Redress & Client Money Protection :

Benham and Reeves are members of The Property Ombudsman redress scheme and have Client Money protection with ARLA Propertymark. You can find more information on our website at <https://www.benhamandreeves.com/membership/>



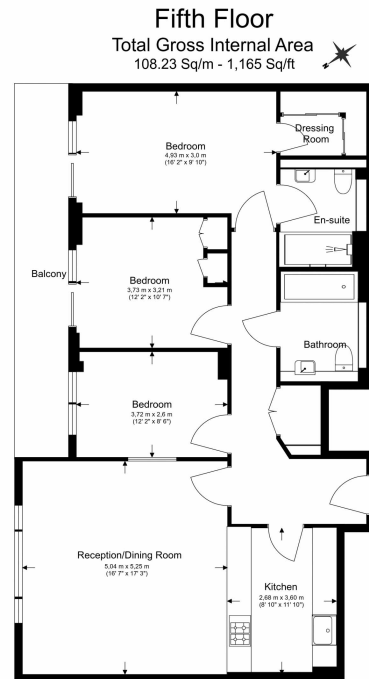
Benham & Reeves



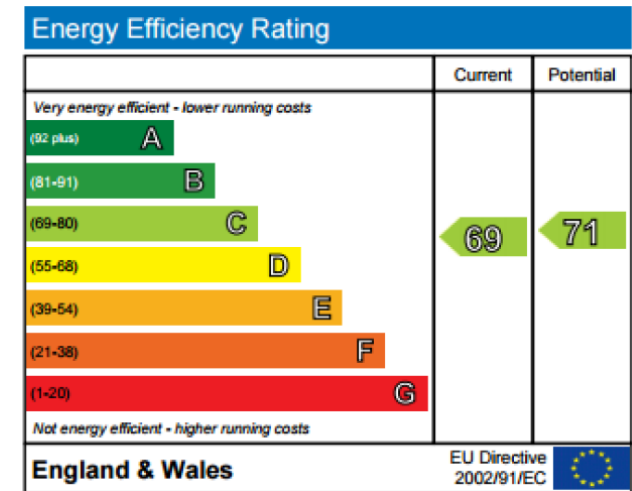
Lensbury Avenue, Fulham, SW6

£981 per week, £4,250 per month + fees

www.benhams.com



Floor Plan measurements are approximate and are for illustrative purposes only. While we do not doubt the floor plans accuracy, we make no guarantee, warranty or representation as to the accuracy and completeness of the floor plan.



London branches open six days a week Mon - Sat

Canary Wharf | City | Colindale | Dartmouth Park | Ealing | Fulham
Hammersmith | Hampstead | Highgate | Hyde Park | Kensington | Kew
Knightsbridge | Nine Elms | Shoreditch | Southall | Surrey Quays
Wapping | Wembley | White City | Woolwich

International offices

China | Hong Kong SAR | India | Indonesia | Qatar | Malaysia | Middle East | Pakistan
Singapore | South Africa | Thailand | Turkey



Benham & Reeves