



Benham & Reeves

Rylston Road, Fulham, SW6

£1,154 per week, £5,000 per month + fees

🛏 4 Bedrooms 🚿 3 Bathrooms 🛋 Unfurnished

A stunning, bright, and modern house , with South West facing private terraced garden and rooftop balcony, situated on a scenic road in Fulham. private garden on the popular Rylston road in Fulham. Positioned an easy walk from Parsons Green & Fulham Broadway Underground Stations.

Please [click here](#) for full detail

Property features

4 bedrooms with huge built in wardrobes | 3 bathroom decorated impeccably | On street parking | Part-furnished and flexible | Large and bright living room | EPC-TBC | Over 3 floors of prime Fulham living | Top floor bedroom leading out to tranquil balcony | Private courtyard garden | Parsons Green & Fulham Broadway underground stations

For more information about this property,
please call our Fulham branch on

020 7348 7620

Redress & Client Money Protection :

Benham and Reeves are members of The Property Ombudsman redress scheme and have Client Money protection with ARLA Propertymark. You can find more information on our website at <https://www.benhamandreeves.com/membership/>



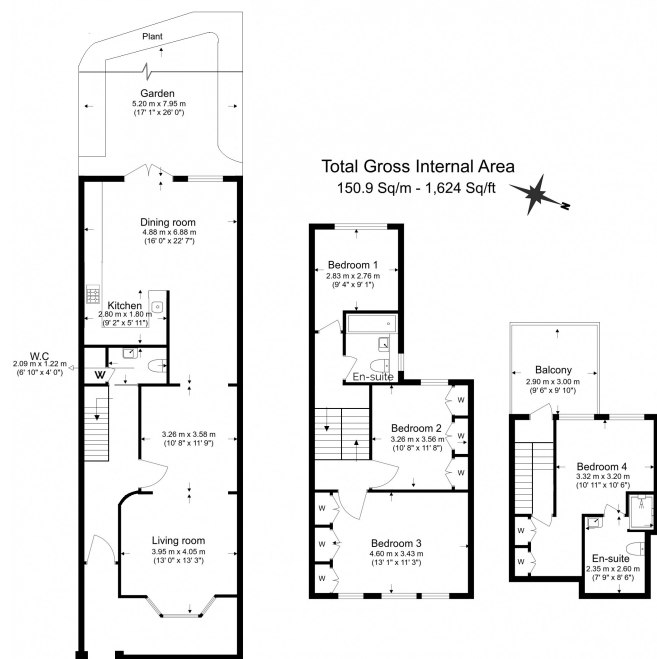
Benham & Reeves



Rylston Road, Fulham, SW6

£1,154 per week, £5,000 per month + fees

www.benhams.com



Benham & Reeves

Floor Plan measurements are approximate and are for illustrative purposes only. While we do not doubt the floor plans accuracy, we make no guarantee, warranty or representation as to the accuracy and completeness of the floor plan.

London branches open six days a week Mon - Sat

Canary Wharf | City | Colindale | Dartmouth Park | Ealing | Fulham
Hammersmith | Hampstead | Highgate | Hyde Park | Kensington | Kew
Knightsbridge | Nine Elms | Shoreditch | Southall | Surrey Quays
Wapping | Wembley | White City | Woolwich

International offices

China | Hong Kong SAR | India | Indonesia | Qatar | Malaysia | Middle East | Pakistan
Singapore | South Africa | Thailand | Turkey



Benham & Reeves