



Benham & Reeves

**The Boulevard, Fulham, SW6**

£920 per week, £3,987 per month + fees

 3 Bedrooms    2 Bathrooms     
Furnished/UnFurnished

A well-presented, spacious split-level penthouse set in a prestigious building within the popular Imperial Wharf development close to the amenities of Fulham. The property is located moments away from Imperial Wharf Overground station.

Please [click here](#) for full detail

## Property features

**3 Bedrooms | 3 Bathrooms | Luxury Living area with high ceilings | Furn/Unfurn | Modern fitted kitchen | EPC-C | Lovely views of London and the River Thames | Underground parking | Nearby Imperial Wharf station**

For more information about this property, please call our Fulham branch on

**020 7348 7620**

Redress & Client Money Protection :

Benham and Reeves are members of The Property Ombudsman redress scheme and have Client Money protection with ARLA Propertymark. You can find more information on our website at <https://www.benhams.com/membership/>



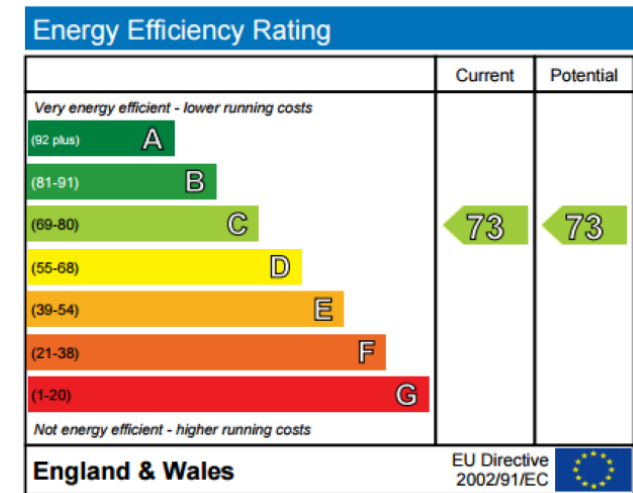
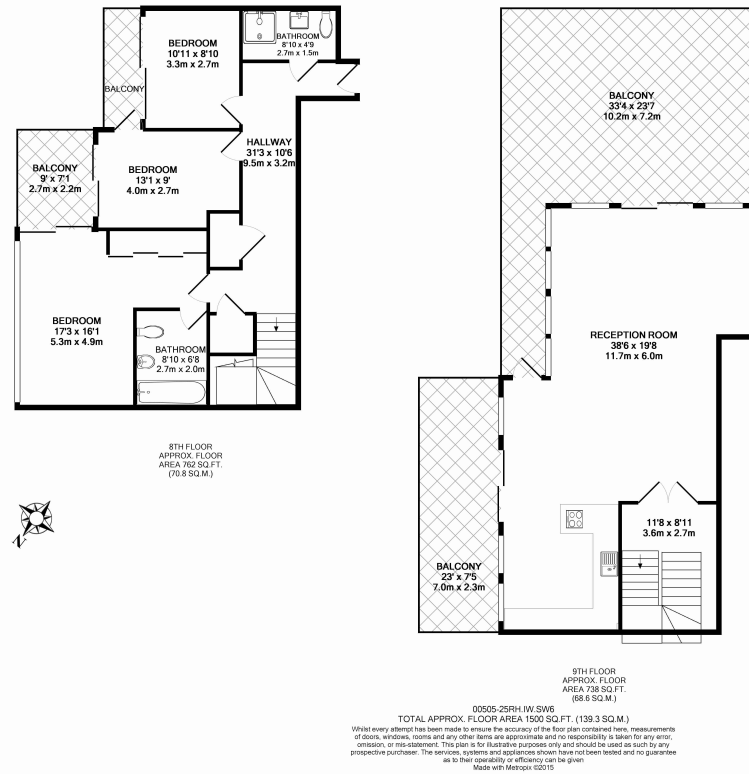
Benham & Reeves



# The Boulevard, Fulham, SW6

£920 per week, £3,987 per month + fees

www.benhams.com



## London branches open six days a week Mon - Sat

Canary Wharf | City | Colindale | Dartmouth Park | Ealing | Fulham  
Hammersmith | Hampstead | Highgate | Hyde Park | Kensington | Kew  
Knightsbridge | Nine Elms | Shoreditch | Southall | Surrey Quays  
Wapping | Wembley | White City | Woolwich

## International offices

China | Hong Kong SAR | India | Indonesia | Qatar | Malaysia | Middle East |  
Singapore | South Africa | Thailand | Turkey



Benham & Reeves