



Benham&Reeves

Imperial Wharf, Fulham, SW6

£900 per week, £3,900 per month + fees

 3 Bedrooms  2 Bathrooms  Furnished

Spacious luxury 6th floor apartment with direct River views situated in a vibrant development close to the amenities of Fulham. Ideally located moments from Imperial Wharf Overground Station. Fulham Broadway Tube station is located within a 15-minute walk serviced by the District line.

Please [click here](#) for full detail

Property features

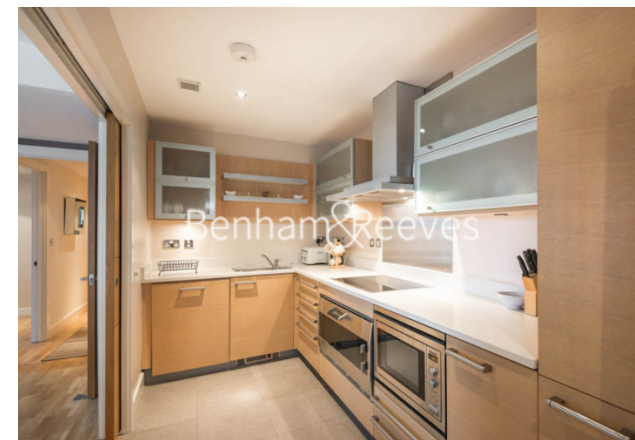
3 Bedrooms | 2 Bathrooms | Reception | Furnished | Fitted Kitchen | EPC-B | 24 Hour Concierge | Residents' gym | Nearby Imperial Wharf Station

For more information about this property,
please call our Fulham branch on

020 7348 7620

Redress & Client Money Protection :

Benham and Reeves are members of The Property Ombudsman redress scheme and have Client Money protection with ARLA Propertymark. You can find more information on our website at <https://www.benhamandreeves.com/membership/>



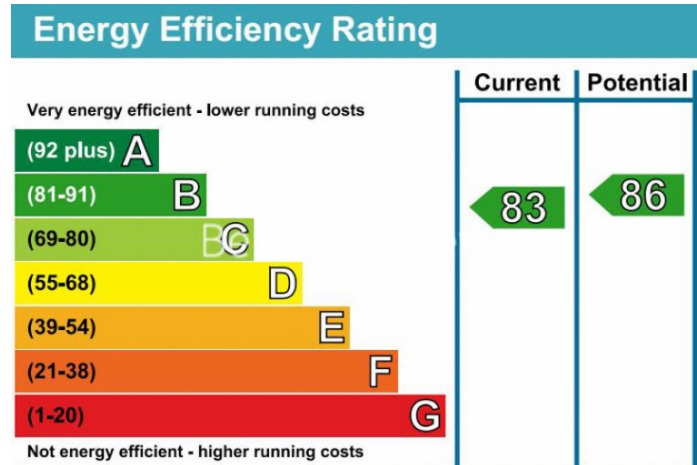
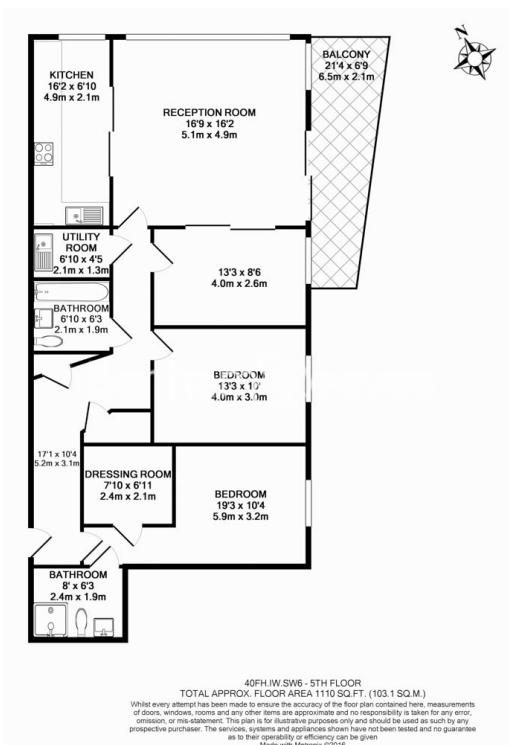
Benham&Reeves



Imperial Wharf, Fulham, SW6

£900 per week, £3,900 per month + fees

www.benhams.com



London branches open six days a week Mon - Sat

Canary Wharf | City | Colindale | Dartmouth Park | Ealing | Fulham
Hammersmith | Hampstead | Highgate | Hyde Park | Kensington | Kew
Knightsbridge | Nine Elms | Shoreditch | Southall | Surrey Quays
Wapping | Wembley | White City | Woolwich

International offices

China | Hong Kong SAR | India | Indonesia | Qatar | Malaysia | Middle East |
Singapore | South Africa | Thailand | Turkey



Benham & Reeves