



Benham & Reeves

Park Street, Fulham, SW6

£550 per week, £2,383 per month + fees

 Studio  1 Bathroom  Furnished

A modern 4th floor Manhattan studio apartment set in an exclusive Riverside development on the fringes of Fulham and Chelsea. The property features exclusive health spa and fitness suite and is less than a mile from Fulham Broadway Tube Station (District Line).

Please [click here](#) for full detail

Property features

Manhattan Studio | 1 Bathroom | Reception | Furnished | Fitted Kitchen | EPC-B | Residents' Gym and Swimming Pool | 24 Hour Concierge | Nearby Imperial Wharf Station

For more information about this property,
please call our Fulham branch on

020 7348 7620

Redress & Client Money Protection :

Benham and Reeves are members of The Property Ombudsman redress scheme and have Client Money protection with ARLA Propertymark. You can find more information on our website at <https://www.benhams.com/membership/>



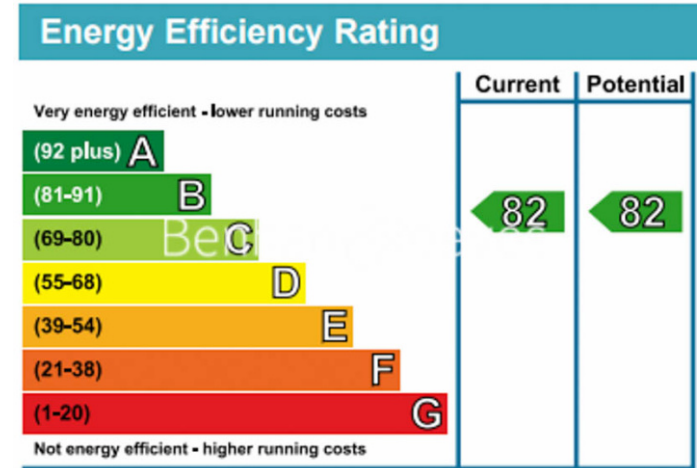
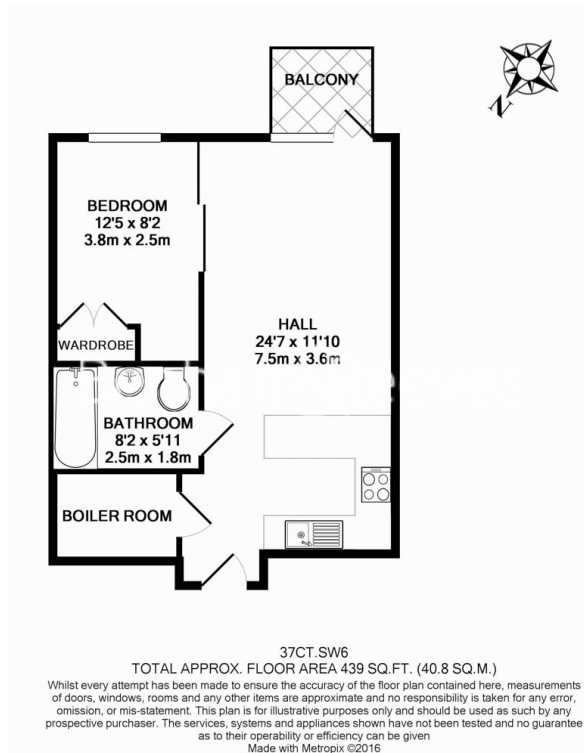
Benham & Reeves



Park Street, Fulham, SW6

£550 per week, £2,383 per month + fees

www.benhams.com



London branches open six days a week Mon - Sat

Canary Wharf | City | Colindale | Dartmouth Park | Ealing | Fulham
Hammersmith | Hampstead | Highgate | Hyde Park | Kensington | Kew
Knightsbridge | Nine Elms | Shoreditch | Southall | Surrey Quays
Wapping | Wembley | White City | Woolwich

International offices

China | Hong Kong SAR | India | Indonesia | Qatar | Malaysia | Middle East |
Singapore | South Africa | Thailand | Turkey

