



Benham & Reeves

**Townmead Road, Fulham, SW6**

£500 per week, £2,167 per month + fees

 1 Bedroom    1 Bathroom    Furnished

Modern sixth floor apartment with 24-hour concierge and optional secure underground parking well located to the amenities of Fulham, Imperial Wharf Overground Station and Southern train line service.

Please [click here](#) for full detail

## Property features

**1 Bedroom | 1 Bathroom | Reception | Furnished | Fitted Kitchen | EPC-B | Balcony | 24 hour porter | Nearby Imperial Wharf Overground**

For more information about this property,  
please call our Fulham branch on

**020 7348 7620**

Redress & Client Money Protection :

Benham and Reeves are members of The Property Ombudsman redress scheme and have Client Money protection with ARLA Propertymark. You can find more information on our website at <https://www.benhamandreeves.com/membership/>

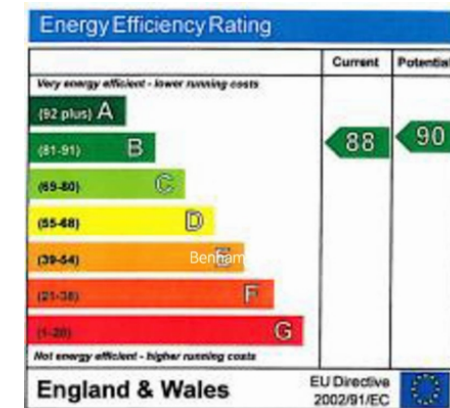
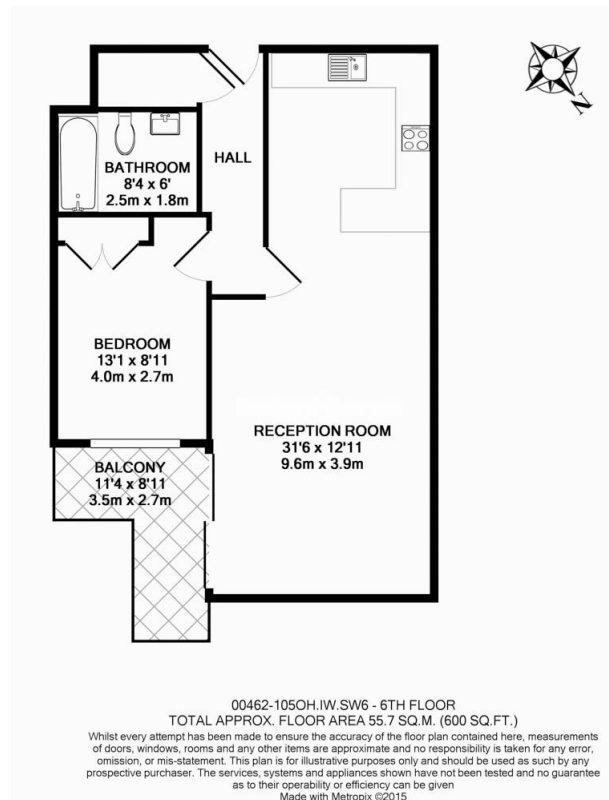


**Benham&Reeves**

# Townmead Road, Fulham, SW6

£500 per week, £2,167 per month + fees

[www.benhams.com](http://www.benhams.com)



The energy efficiency rating is a measure of the overall efficiency of a home. The higher the rating the more energy efficient the home is and the lower the fuel bills are likely to be.

## London branches open six days a week Mon - Sat

Canary Wharf | City | Colindale | Dartmouth Park | Ealing | Fulham  
Hammersmith | Hampstead | Highgate | Hyde Park | Kensington | Kew  
Knightsbridge | Nine Elms | Shoreditch | Southall | Surrey Quays  
Wapping | Wembley | White City | Woolwich

## International offices

China | Hong Kong SAR | India | Israel | Malaysia | Middle East | Pakistan  
Qatar | Singapore | South Africa | Thailand | Turkey



Benham & Reeves