



Benham & Reeves

**Thurstan Street, Fullham, SW6**

£950 per week, £4,117 per month + fees

🛏 2 Bedrooms   🚿 2 Bathrooms   🚗 Furnished

An elegant spacious apartment, with residents' indoor swimming pool, situated in a popular Riverside development close to Fulham and Chelsea. Moments from Imperial Wharf Overground Station and less than a mile from Fulham Broadway Underground Station (District Line).

Please [click here](#) for full detail

### Property features

**2 Bedrooms | 2 Bathrooms | Reception | Furnished | Fitted kitchen | EPC-B | 24 hour concierge | Residents' Gym and Swimming Pool | Nearby Imperial Wharf Station**

For more information about this property, please call our Fulham branch on

**020 7348 7620**

Redress & Client Money Protection :

Benham and Reeves are members of The Property Ombudsman redress scheme and have Client Money protection with ARLA Propertymark.

You can find more information on our website at <https://www.benhamandreeves.com/membership/>



Benham&Reeves

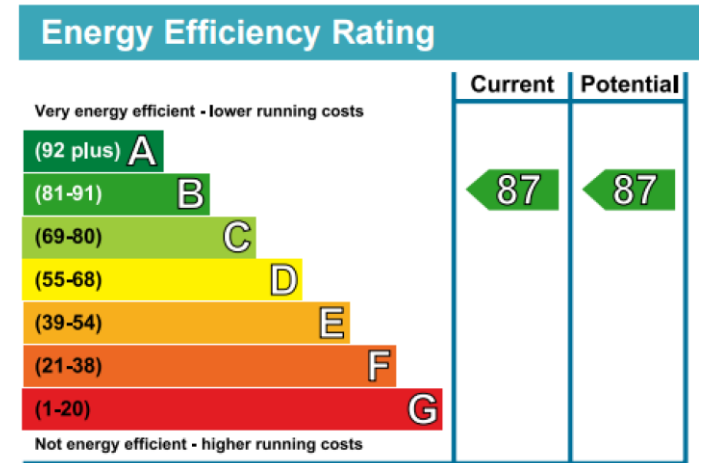
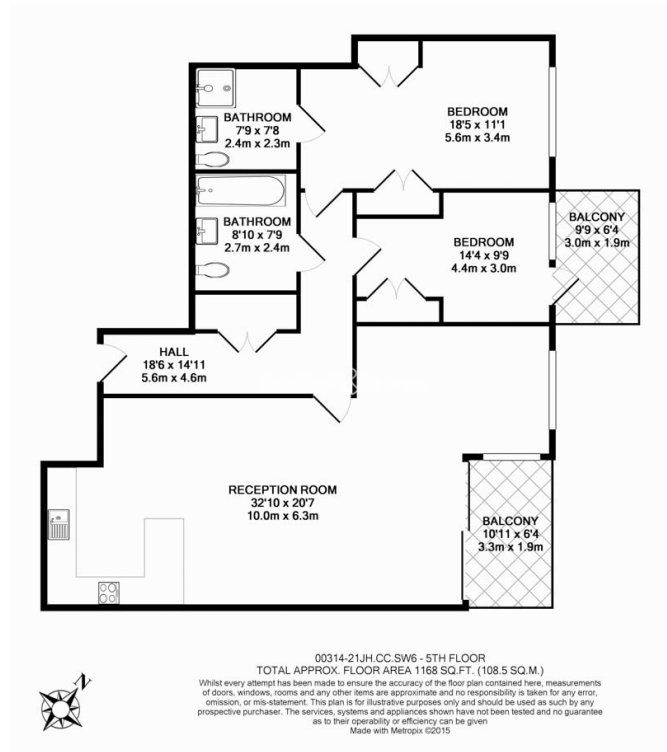




# Thurstan Street, Fulham, SW6

£950 per week, £4,117 per month + fees

www.benhams.com



## London branches open six days a week Mon - Sat

Canary Wharf | City | Colindale | Dartmouth Park | Ealing | Fulham  
Hammersmith | Hampstead | Highgate | Hyde Park | Kensington | Kew  
Knightsbridge | Nine Elms | Shoreditch | Southall | Surrey Quays  
Wapping | Wembley | White City | Woolwich

## International offices

China | Hong Kong SAR | India | Indonesia | Qatar | Malaysia | Middle East |  
Singapore | South Africa | Thailand | Turkey



Benham & Reeves