



Benham & Reeves

London Square, Gaumont Place, SW2

£497 per week, £2,154 per month + fees

 1 Bedroom  1 Bathroom  Furnished

A modern one double bedroom apartment located in the brand new London Square development on Streatham Hill

Please [click here](#) for full detail

Property features

One double bedroom | One bathroom | Balcony | Open planned living | Dishwasher | EPC-B | Porter | Concierge | Nearby Streatham Hill Station

For more information about this property, please call our Nine Elms branch on

020 3282 3700

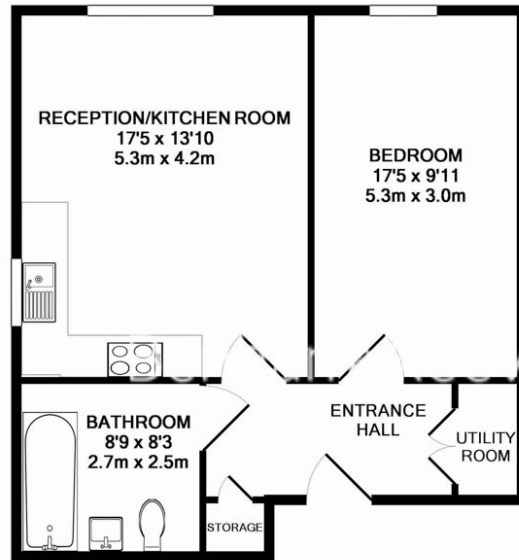




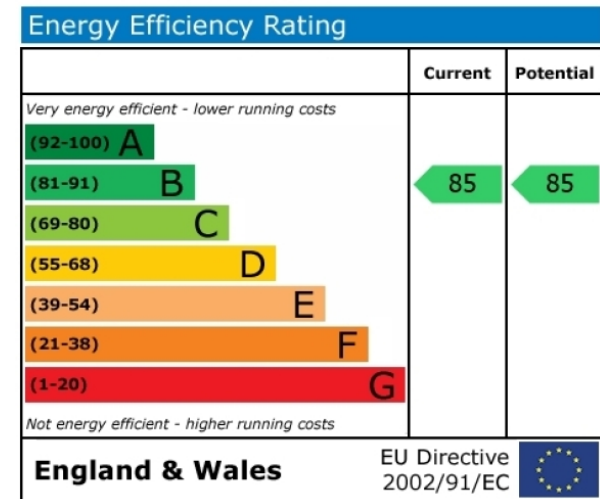
London Square, Gaumont Place, SW2

£497 per week, £2,154 per month + fees

www.benhams.com



23LS.3GP.SW2
 TOTAL APPROX. FLOOR AREA 578 SQ.FT. (53.7 SQ.M.)
 Whilst every attempt has been made to ensure the accuracy of the floor plan contained here, measurements of doors, windows, rooms and any other items are approximate and no responsibility is taken for any error, omission, or mis-statement. This plan is for illustrative purposes only and should be used as such by any prospective purchaser. The services, systems and appliances shown have not been tested and no guarantee as to their operability or efficiency can be given
 Made with Metropix ©2017



London branches open six days a week Mon - Sat

Canary Wharf | City | Colindale | Dartmouth Park | Ealing | Fulham
 Hammersmith | Hampstead | Highgate | Hyde Park | Kensington | Kew
 Knightsbridge | Nine Elms | Shoreditch | Southall | Surrey Quays
 Wapping | Wembley | White City | Woolwich

International offices

China | Hong Kong SAR | India | Indonesia | Qatar | Malaysia | Middle East |
 Singapore | South Africa | Thailand | Turkey

