



Benham & Reeves

## **Southwell Gardens, Gloucester Road, SW7**

£800 per week, £3,467 per month + fees

🛏 2 Bedrooms    🚿 2 Bathrooms    🛋 Furnished

Smart 2nd floor apartment set in a well-kept period property close to the amenities of Gloucester Road, South Kensington, and Knightsbridge. The property is nearby Gloucester Road (District, Circle and Piccadilly lines) underground station.

Please [click here](#) for full detail

## Property features

**2 Bedrooms | 2 Bathrooms | Reception | Furnished | Fitted Kitchen | EPC-C | 732 Sq.Ft | Wood Flooring | Quiet Street | Gloucester Road Underground Station**

For more information about this property,  
please call our Kensington branch on

**020 7938 3522**



Redress & Client Money Protection :  
Benham and Reeves are members of The Property Ombudsman redress scheme and have Client Money protection with ARLA Propertymark.  
You can find more information on our website at <https://www.benhams.com/membership/>

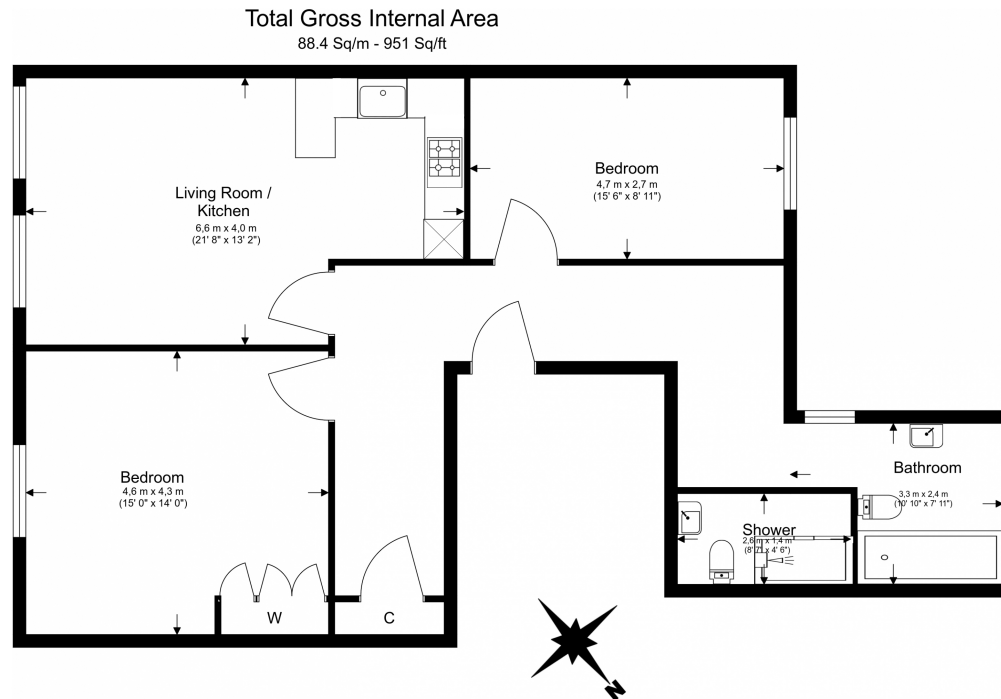
Benham & Reeves



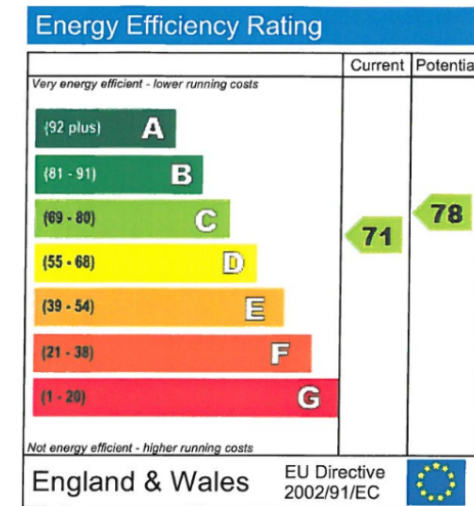
# Southwell Gardens, Gloucester Road, SW7

£800 per week, £3,467 per month + fees

[www.benhams.com](http://www.benhams.com)



Floor Plan measurements are approximate and are for illustrative purposes only. While we do not doubt the floor plans accuracy, we make no guarantee, warranty or representation as to the accuracy and completeness of the floor plan.



## London branches open six days a week Mon - Sat

Canary Wharf | City | Colindale | Dartmouth Park | Ealing | Fulham  
Hammersmith | Hampstead | Highgate | Hyde Park | Kensington | Kew  
Knightsbridge | Nine Elms | Shoreditch | Southall | Surrey Quays  
Wapping | Wembley | White City | Woolwich

## International offices

China | Hong Kong SAR | India | Indonesia | Qatar | Malaysia | Middle East | Pakistan  
Singapore | South Africa | Thailand | Turkey



Benham & Reeves