



Benham&Reeves

**Trinity Court, Gloucester Terrace, Bayswater,
Westbourne Grove W2**

£693 per week, £3,003 per month + fees

 2 Bedrooms  2 Bathrooms  Furnished

A well-presented 2 double bedroom apartment spans just under 948 sq ft set on the 1st floor of this sought-after development called Trinity Court. The property is only moments from the world-famous Hyde Park & close to numerous public transports. EPC-C

Please [click here](#) for full detail

Property features

2 x Double Bedroom with Large Built-in Wardrobes | 2 x Luxury Bathroom | Sizeable & Large Reception with Dining Area / Large Windows | Open-Plan Fully Fitted Separate Kitchen | Furnished or Unfurnished / Wooden Flooring Throughout | EPC-TBC | Daytime Portage / 24 Hrs CCTV | Underground Parking on Separate Negotiation | The World Famous Regents Park & Queensway High Street | Bayswater, Queensway & Royal Oak Underground Stations

For more information about this property,
please call our Hyde Park branch on

020 7402 9866



Redress & Client Money Protection :

Benham and Reeves are members of The Property Ombudsman redress scheme and have Client Money protection with ARLA Propertymark. You can find more information on our website at <https://www.benhams.com/membership/>

Benham & Reeves

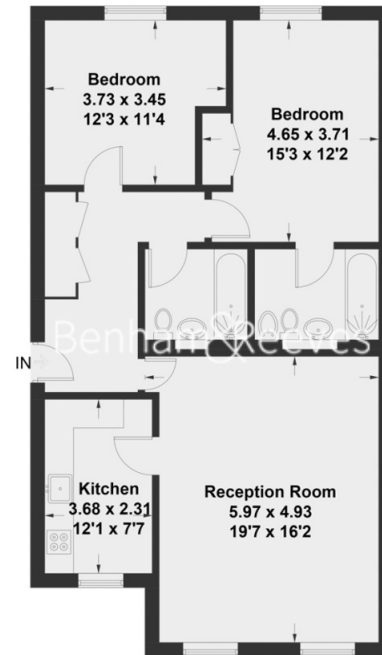


Trinity Court, Gloucester Terrace, Bayswater, Westbourne Grove W2

www.benhams.com

£693 per week, £3,003 per month + fees

Trinity Court
Approximate Gross Internal Area = 88 sq m / 947 sq ft



First Floor

London branches open six days a week Mon - Sat

Canary Wharf | City | Colindale | Dartmouth Park | Ealing | Fulham
Hammersmith | Hampstead | Highgate | Hyde Park | Kensington | Kew
Knightsbridge | Nine Elms | Shoreditch | Southall | Surrey Quays
Wapping | Wembley | White City | Woolwich

International offices

China | Hong Kong SAR | India | Indonesia | Qatar | Malaysia | Middle East | Pakistan
Singapore | South Africa | Thailand | Turkey



Benham & Reeves