



Benham & Reeves

Hodford Road, Golders Green, NW11

£2,450 per week, £10,617 per month + fees

 3 Bedrooms  3 Bathrooms  Furnished

A luxurious fifth floor penthouse apartment set in a prestigious development with stunning panoramic views of the London skyline and situated near the open spaces of Golders Hill Park and Hampstead Heath. Well-located for Golders Green Tube Station.

Please [click here](#) for full detail

Property features

3 Bedrooms | 3 Bathrooms | Reception | Furnished | Fitted Kitchen | EPC-B | 3 Private Balconies | Communal Garden | Nearby Golders Green Tube Station

For more information about this property,
please call our Hampstead branch on

020 7435 9681

Redress & Client Money Protection :

Benham and Reeves are members of The Property Ombudsman redress scheme and have Client Money protection with ARLA Propertymark. You can find more information on our website at <https://www.benhamandreeves.com/membership/>



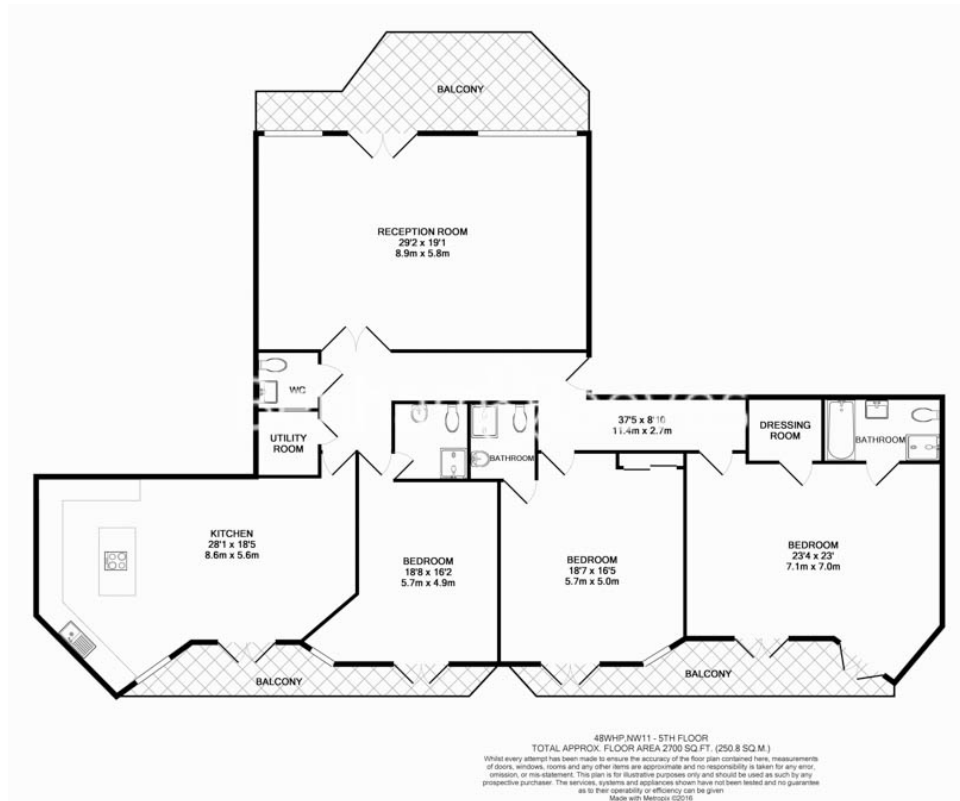
Benham & Reeves




Hodford Road, Golders Green, NW11

£2,450 per week, £10,617 per month + fees

www.benhams.com



Energy Efficiency Rating		
	Current	Potential
Very energy efficient - lower running costs		
(92-plus) A		
(81-91) B	82	83
(69-80) C		
(55-68) D		
(39-54) E		
(21-38) F		
(1-20) G		
Not energy efficient - higher running costs		
England & Wales	EU Directive 2002/91/EC 	

London branches open six days a week Mon - Sat

Canary Wharf | City | Colindale | Dartmouth Park | Ealing | Fulham
Hammersmith | Hampstead | Highgate | Hyde Park | Kensington | Kew
Knightsbridge | Nine Elms | Shoreditch | Southall | Surrey Quays
Wapping | Wembley | White City | Woolwich

International offices

China | Hong Kong SAR | India | Indonesia | Qatar | Malaysia | Middle East |
Singapore | South Africa | Thailand | Turkey



Benham & Reeves