



Benham & Reeves

Wessex Way, Golders Green, NW11

£404 per week, £1,751 per month + fees

 2 Bedrooms  1 Bathroom 
Furnished/UnFurnished

A spacious ground floor apartment, with front and rear gardens, set in a period in Golders Green. Ideally positioned for Brent Cross Tube Station (Northern Line).

Please [click here](#) for full detail

Property features

2 Bedrooms | 1 Bathroom | Reception | Furn/Unfurn | Fitted Kitchen | EPC-D | Permit Parking | Front and Rear Garden | Nearby Brent Cross & Golders Green Tube Stations

For more information about this property,
please call our Hampstead branch on

020 7435 9681

Redress & Client Money Protection :

Benham and Reeves are members of The Property Ombudsman redress scheme and have Client Money protection with ARLA Propertymark. You can find more information on our website at <https://www.benhamandreeves.com/membership/>



Benham&Reeves

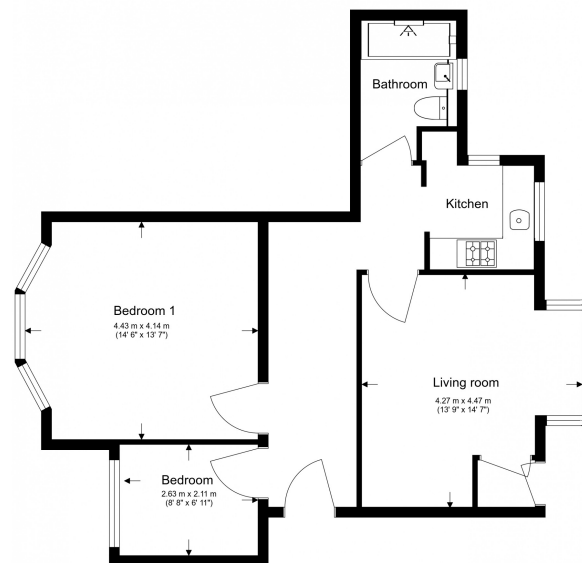


Wessex Way, Golders Green, NW11

£404 per week, £1,751 per month + fees

www.benhams.com

Total Gross Internal Area
62.2 Sq/m - 670 Sq/ft



Floor Plan measurements are approximate and are for illustrative purposes only. While we do not doubt the floor plans accuracy, we make no guarantee, warranty or representation as to the accuracy and completeness of the floor plan.

London branches open six days a week Mon - Sat

Canary Wharf | City | Colindale | Dartmouth Park | Ealing | Fulham
Hammersmith | Hampstead | Highgate | Hyde Park | Kensington | Kew
Knightsbridge | Nine Elms | Shoreditch | Southall | Surrey Quays
Wapping | Wembley | White City | Woolwich

International offices

China | Hong Kong SAR | India | Indonesia | Qatar | Malaysia | Middle East | Pakistan
Singapore | South Africa | Thailand | Turkey



Benham & Reeves