



Benham & Reeves

## **The Ridgeway, Golders's green, NW11**

£900 per week, £3,900 per month + fees

 2 Bedrooms    3 Bathrooms     
Furnished/UnFurnished

Luxury apartment with parking situated at the end of a tree lined cul-de-sac near to Hampstead Heath, and well connected to Central London. A short walk from Golders Green Underground station.

Please [click here](#) for full detail

## Property features

**Modern interior throughout | Private entrance | Wood Floors | Spacious Living area | Master en-suite bathroom | EPC-C | 1,800sqft | Private Garden | Nearby Golders Green Station**

For more information about this property,  
please call our Hampstead branch on

**020 7435 9681**

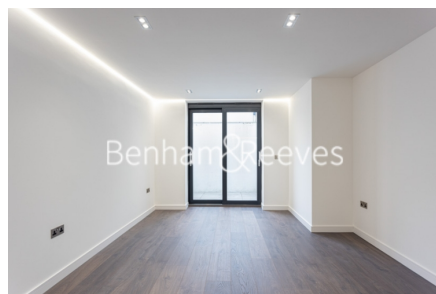
Redress & Client Money Protection :

Benham and Reeves are members of The Property Ombudsman redress scheme and have Client Money protection with ARLA Propertymark. You can find more information on our website at <https://www.benhamandreeves.com/membership/>



**Benham & Reeves**





# The Ridgeway, Golders's green, NW11

£900 per week, £3,900 per month + fees

[www.benhams.com](http://www.benhams.com)

Score	Energy rating	Current	Potential
92+	A		
81-91	B		
69-80	C	79   c	79   c
55-68	D		
39-54	E		
21-38	F		
1-20	G		

## London branches open six days a week Mon - Sat

Canary Wharf | City | Colindale | Dartmouth Park | Ealing | Fulham  
Hammersmith | Hampstead | Highgate | Hyde Park | Kensington | Kew  
Knightsbridge | Nine Elms | Shoreditch | Southall | Surrey Quays  
Wapping | Wembley | White City | Woolwich

## International offices

China | Hong Kong SAR | India | Indonesia | Qatar | Malaysia | Middle East | Pakistan  
Singapore | South Africa | Thailand | Turkey

