

Benham & Reeves

Serapis house, Good Luck Hope, E14

£508 per week, £2,200 per month + fees

 1 Bedroom  1 Bathroom  Furnished

Spacious apartment, with panoramic views and residents' swimming pool, situated in a highly anticipated development in E14. Located within walking distance of Canning Town Underground and DLR station (Jubilee Line).

Please [click here](#) for full detail

Property features

One bedroom | One bathroom | Open Planned Living | Private Balcony With Superb Views | Large Bedroom With Fitted Wardrobe | EPC-B | 24 Hour Concierge | Residents Gym , Swimming Pool | Available Now | Walk Away From Canning Town Dlr And The Jubille Services

For more information about this property,
please call our Canary Wharf branch on

020 8036 3200

Redress & Client Money Protection :

Benham and Reeves are members of The Property Ombudsman redress scheme and have Client Money protection with ARLA Propertymark. You can find more information on our website at <https://www.benhams.com/membership/>



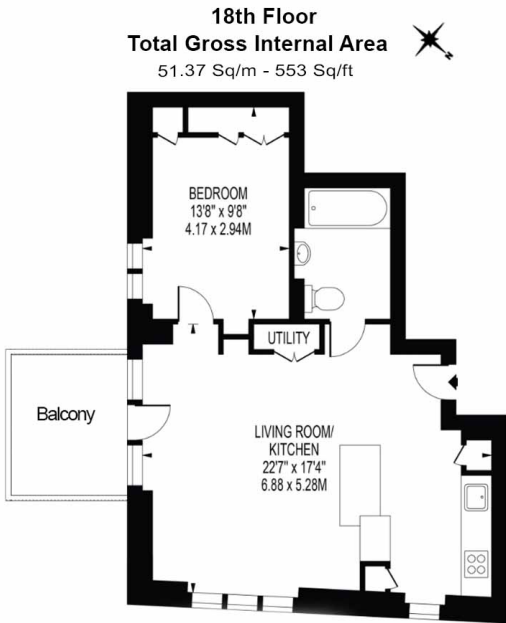
Benham & Reeves



Serapis house, Good Luck Hope, E14

£508 per week, £2,200 per month + fees

www.benhams.com



Floor Plan measurements are approximate and are for illustrative purposes only. While we do not doubt the floor plans accuracy, we make no guarantee, warranty or representation as to the accuracy and completeness of the floor plan.

Score	Energy rating	Current	Potential
92+	A		
81-91	B	84 B	84 B
69-80	C		
55-68	D		
39-54	E		
21-38	F		
1-20	G		

London branches open six days a week Mon - Sat

Canary Wharf | City | Colindale | Dartmouth Park | Ealing | Fulham
Hammersmith | Hampstead | Highgate | Hyde Park | Kensington | Kew
Knightsbridge | Nine Elms | Shoreditch | Southall | Surrey Quays
Wapping | Wembley | White City | Woolwich

International offices

China | Hong Kong SAR | India | Indonesia | Qatar | Malaysia | Middle East |
Singapore | South Africa | Thailand | Turkey

