



Benham & Reeves

Bridges Court Road, Battersea, SW11

£700 per week, £3,033 per month + fees

 2 Bedrooms  2 Bathrooms  Furnished

Large luxury air-conditioned apartment situated in a prestigious development in Battersea. The property is ideally located within walking distance from Clapham Junction station

Please [click here](#) for full detail

Property features

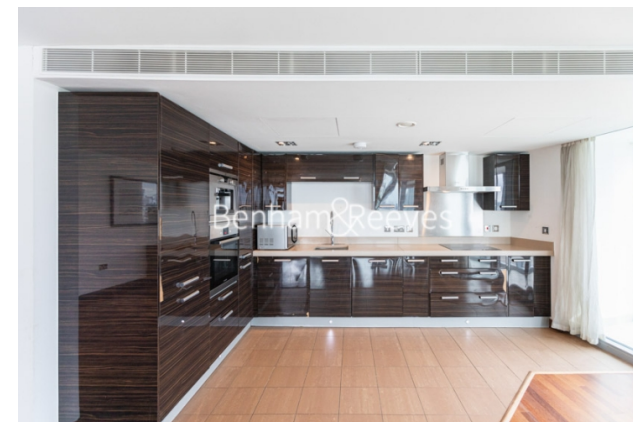
2 Double Bedroom Apartment with Built-in Wardrobe | 24 Hr Concierge / 24 Hr Security / Communal Gardens | Fully Fitted Kitchen Integrated with Well-Known Appliances | Utility Room / Long Hallway/Luxurious 2 x Bathrooms | Quality Furnished /LED Spotlights /Sizable Private Balcony | EPC-B | Double Reception Room with Dining Area | Air Ventilation / Underfloor Heating / Air Conditioning | Walking distance to Clapham Junction Station

For more information about this property,
please call our Fulham branch on

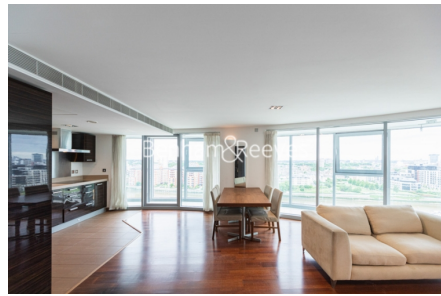
020 7348 7620

Redress & Client Money Protection :

Benham and Reeves are members of The Property Ombudsman redress scheme and have Client Money protection with ARLA Propertymark. You can find more information on our website at <https://www.benhamandreeves.com/membership/>



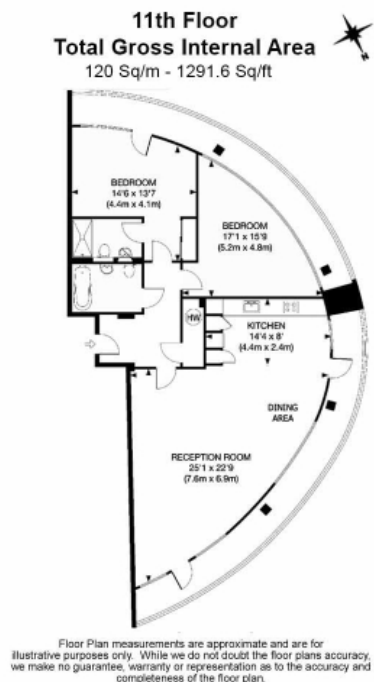
Benham & Reeves



Bridges Court Road, Battersea, SW11

£700 per week, £3,033 per month + fees

www.benhams.com



| Score | Energy rating | Current | Potential |
|-------|---------------|---------|-----------|
| 92+ | A | | |
| 81-91 | B | 83 B | 84 B |
| 69-80 | C | | |
| 55-68 | D | | |
| 39-54 | E | | |
| 21-38 | F | | |
| 1-20 | G | | |

London branches open six days a week Mon - Sat

Canary Wharf | City | Colindale | Dartmouth Park | Ealing | Fulham
Hammersmith | Hampstead | Highgate | Hyde Park | Kensington | Kew
Knightsbridge | Nine Elms | Shoreditch | Southall | Surrey Quays
Wapping | Wembley | White City | Woolwich

International offices

China | Hong Kong SAR | India | Israel | Malaysia | Middle East | Pakistan
Qatar | Singapore | South Africa | Thailand | Turkey

