



Benham & Reeves

Legacy Tower, Great Eastern Road Stratford, E15

£727 per week, £3,150 per month + fees

 2 Bedrooms  2 Bathrooms  Furnished

An exceptional apartment featuring approximately situated in a sought after residential development a short walk from Stratford Underground Station where there are connections to the Jubilee, DLR, Central and overground lines.

Please [click here](#) for full detail

Property features

Two Double bedroom | Two Bathroom | Open Planned Living Room pprox | Furnished | Fitted Kitchen | EPC-B | Concierge | Gym | 906 sqft | Short walk from Stratford Underground Station

For more information about this property, please call our Canary Wharf branch on

020 8036 3200

Redress & Client Money Protection :

Benham and Reeves are members of The Property Ombudsman redress scheme and have Client Money protection with ARLA Propertymark. You can find more information on our website at <https://www.benhams.com/membership/>



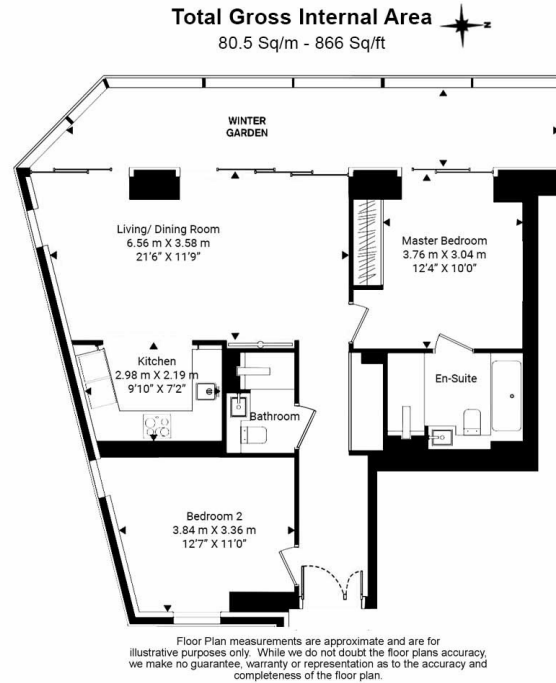
Benham & Reeves



Legacy Tower, Great Eastern Road Stratford, E15

£727 per week, £3,150 per month + fees

www.benhams.com



Score	Energy rating	Current	Potential
92+	A		
81-91	B	86 B	86 B
69-80	C		
55-68	D		
39-54	E		
21-38	F		
1-20	G		

Activate
Go to Settling

London branches open six days a week Mon - Sat

Canary Wharf | City | Colindale | Dartmouth Park | Ealing | Fulham
Hammersmith | Hampstead | Highgate | Hyde Park | Kensington | Kew
Knightsbridge | Nine Elms | Shoreditch | Southall | Surrey Quays
Wapping | Wembley | White City | Woolwich

International offices

China | Hong Kong SAR | India | Indonesia | Qatar | Malaysia | Middle East |
Singapore | South Africa | Thailand | Turkey



Benham & Reeves