



Benham&Reeves

Portland Place, Greenhithe, DA9

£415 per week, £1,800 per month + fees

 2 Bedrooms  2 Bathrooms  Furnished

Superb spacious 1st floor apartment situated within a popular development offering River views across the Thames. Located near to a fast track bus service and ten minutes on foot from Greenhithe mainline Station.

Please [click here](#) for full detail

Property features

2 bed 2 bath located on the 1st floor | Open plan kitchen with well known kitchen appliances | 180 degree panoramic river views | 1 allocated parking space | Balcony | EPC-B | Close to Amenities | A2 and Ebbsfleet International Station | 10 minutes walk to Greenhithe station

For more information about this property,
please call our Woolwich branch on

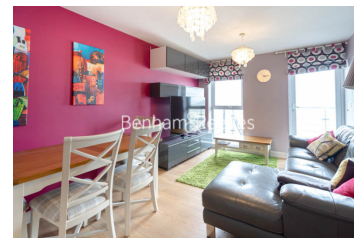
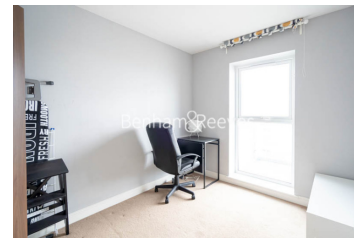
020 8051 0700

Redress & Client Money Protection :

Benham and Reeves are members of The Property Ombudsman redress scheme and have Client Money protection with ARLA Propertymark. You can find more information on our website at <https://www.benhamandreeves.com/membership/>



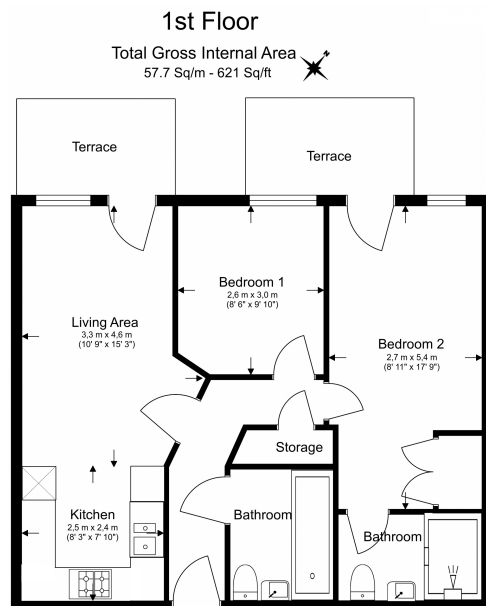
Benham&Reeves



Portland Place, Greenhithe, DA9

£415 per week, £1,800 per month + fees

www.benhams.com



Floor Plan measurements are approximate and are for illustrative purposes only. While we do not doubt the floor plans accuracy we make no guarantee, warranty or representation as to the accuracy and completeness of the floor plan.

Score	Energy rating	Current	Potential
92+	A		
81-91	B	83 B	88 B
69-80	C		
55-68	D		
39-54	E		
21-38	F		
1-20	G		

London branches open six days a week Mon - Sat

Canary Wharf | City | Colindale | Dartmouth Park | Ealing | Fulham
Hammersmith | Hampstead | Highgate | Hyde Park | Kensington | Kew
Knightsbridge | Nine Elms | Shoreditch | Southall | Surrey Quays
Wapping | Wembley | White City | Woolwich

International offices

China | Hong Kong SAR | India | Indonesia | Qatar | Malaysia | Middle East |
Singapore | South Africa | Thailand | Turkey



Benham & Reeves