



Benham & Reeves

**Viola House, Greenleaf Walk, UB1**

£530 per week, £2,297 per month + fees

 2 Bedrooms    2 Bathrooms    Furnished

This stunning 12th floor apartment is situated in an outstanding biodiverse development on the Western fringe of London featuring great views of the surrounding landscaped gardens. Ideally located a short walk from Southall Station (Zone 4). EPC-B

Please [click here](#) for full detail

## Property features

Concierge | Gym | Cinema Room | Residents Lounge | Underground Parking | EPC-B | Balcony | Furnished | Top floor | Nearby Southall Station (Zone 4)

For more information about this property,  
please call our Southall branch on

**020 8051 0800**

Redress & Client Money Protection :

Benham and Reeves are members of The Property Ombudsman redress scheme and have Client Money protection with ARLA Propertymark. You can find more information on our website at <https://www.benhams.com/membership/>



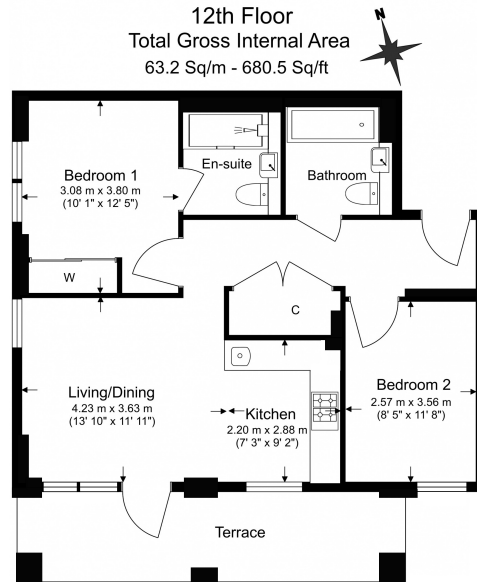
Benham & Reeves



# Viola House, Greenleaf Walk, UB1

£530 per week, £2,297 per month + fees

www.benhams.com



Benham & Reeves

Floor Plan measurements are approximate and are for illustrative purposes only. While we do not doubt the floor plans accuracy, we make no guarantee, warranty or representation as to the accuracy and completeness of the floor plan.

Score	Energy rating	Current	Potential
92+	A		
81-91	B	83 B	83 B
69-80	C		
55-68	D		
39-54	E		
21-38	F		
1-20	G		

The graph shows this property's current and potential energy rating

## London branches open six days a week Mon - Sat

Canary Wharf | City | Colindale | Dartmouth Park | Ealing | Fulham  
Hammersmith | Hampstead | Highgate | Hyde Park | Kensington | Kew  
Knightsbridge | Nine Elms | Shoreditch | Southall | Surrey Quays  
Wapping | Wembley | White City | Woolwich

## International offices

China | Hong Kong SAR | India | Indonesia | Qatar | Malaysia | Middle East |  
Singapore | South Africa | Thailand | Turkey



Benham & Reeves