



Benham & Reeves

Viola House, Greenleaf Walk, UB1

£403 per week, £1,746 per month + fees

 1 Bedroom  1 Bathroom  Furnished

This stunning 10th floor apartment set in the Viola House part of the Green Quarter, an outstanding Berkeley development on the Western fringe of London featuring great views of the surrounding landscaped gardens. Southall Station (Zone 4) is just a short walk away

Please [click here](#) for full detail

Property features

One-bedroom | Concierge | Gym | Cinema Room | Residents Lounge | EPC- B | Balcony | Furnished | Brand New Building - Viola | Brand New Building - Viola

For more information about this property,
please call our Southall branch on

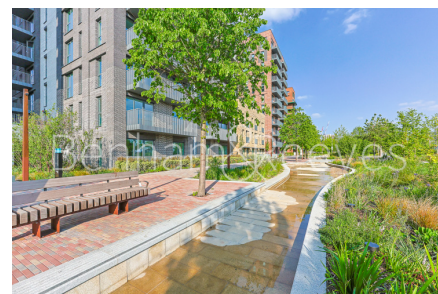
020 8051 0800

Redress & Client Money Protection :

Benham and Reeves are members of The Property Ombudsman redress scheme and have Client Money protection with ARLA Propertymark. You can find more information on our website at <https://www.benhamandreeves.com/membership/>



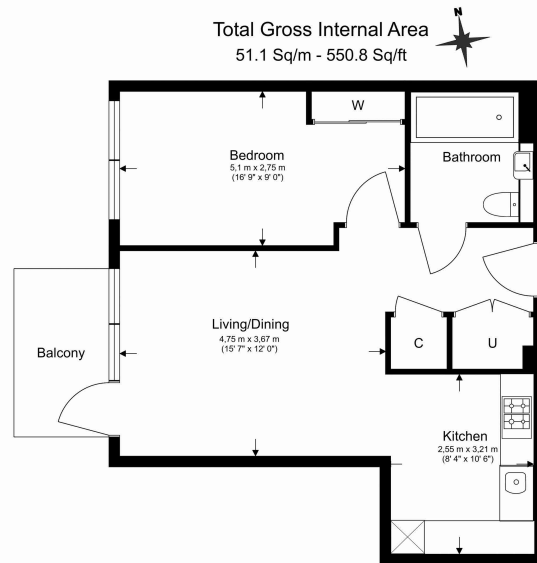
Benham & Reeves



Viola House, Greenleaf Walk, UB1

£403 per week, £1,746 per month + fees

www.benhams.com



Benham&Reeves

Floor Plan measurements are approximate and are for illustrative purposes only. While we do not doubt the floor plans accuracy, we make no guarantee, warranty or representation as to the accuracy and completeness of the floor plan.

Score	Energy rating	Current	Potential
92+	A		
81-91	B	83 B	83 B
69-80	C		
55-68	D		
39-54	E		
21-38	F		
1-20	G		

London branches open six days a week Mon - Sat

Canary Wharf | City | Colindale | Dartmouth Park | Ealing | Fulham
Hammersmith | Hampstead | Highgate | Hyde Park | Kensington | Kew
Knightsbridge | Nine Elms | Shoreditch | Southall | Surrey Quays
Wapping | Wembley | White City | Woolwich

International offices

China | Hong Kong SAR | India | Indonesia | Qatar | Malaysia | Middle East | Pakistan
Singapore | South Africa | Thailand | Turkey



Benham&Reeves