



Benham & Reeves

**Arber House, Greenleaf Walk, UB1**

£346 per week, £1,499 per month + fees

 Studio  1 Bathroom  Unfurnished

This stunning 3rd floor Manhattan Style apartment is situated within an outstanding Berkeley development on the Western fringe of London featuring great views of the surrounding landscaped gardens. Southall Station (Zone 4) is a short walk away

Please [click here](#) for full detail

## Property features

Studio | Concierge | Cinema Room | Residents Lounge | Gym | EPC- B | UnFurnished | Balcony | Nearby Southall Station (Zone 4)

For more information about this property, please call our Southall branch on

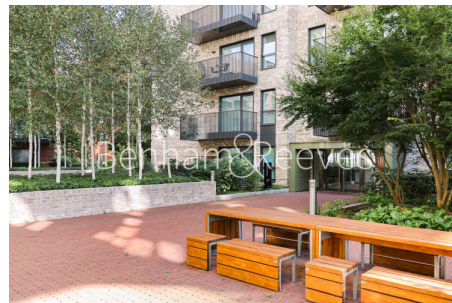
**020 8051 0800**

Redress & Client Money Protection :

Benham and Reeves are members of The Property Ombudsman redress scheme and have Client Money protection with ARLA Propertymark. You can find more information on our website at <https://www.benhams.com/membership/>



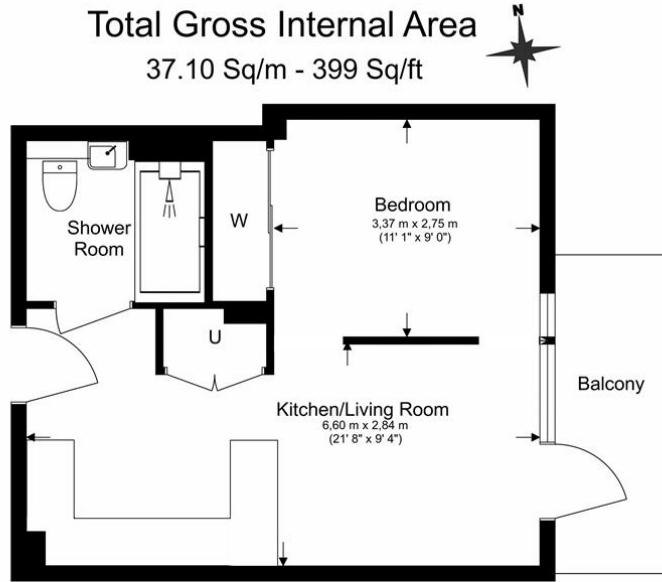
Benham&Reeves



# Arber House, Greenleaf Walk, UB1

£346 per week, £1,499 per month + fees

www.benhams.com



Benham & Reeves

Floor Plan measurements are approximate and are for illustrative purposes only. While we do not doubt the floor plans accuracy, we make no guarantee, warranty or representation as to the accuracy and completeness of the floor plan.

13/08/2025, 11:12 Energy performance certificate (EPC) - Find an energy certificate - GOV.UK

Score	Energy rating	Current	Potential
92+	A		
81-91	B	84 B	84 B
69-80	C		
55-68	D		
39-54	E		
21-38	F		
1-20	G		

## London branches open six days a week Mon - Sat

Canary Wharf | City | Colindale | Dartmouth Park | Ealing | Fulham  
Hammersmith | Hampstead | Highgate | Hyde Park | Kensington | Kew  
Knightsbridge | Nine Elms | Shoreditch | Southall | Surrey Quays  
Wapping | Wembley | White City | Woolwich

## International offices

China | Hong Kong SAR | India | Indonesia | Qatar | Malaysia | Middle East |  
Singapore | South Africa | Thailand | Turkey



Benham & Reeves