



Benham & Reeves

**Viola House, Greenleaf Walk, UB1**

£393 per week, £1,703 per month + fees

 1 Bedroom     1 Bathroom     Furnished

This stunning 8th floor apartment is situated in an outstanding new Berkeley development on the Western fringe of London featuring great views of the surrounding landscaped gardens. Located a short walk from Southall Station (Zone 4).

Please [click here](#) for full detail

## Property features

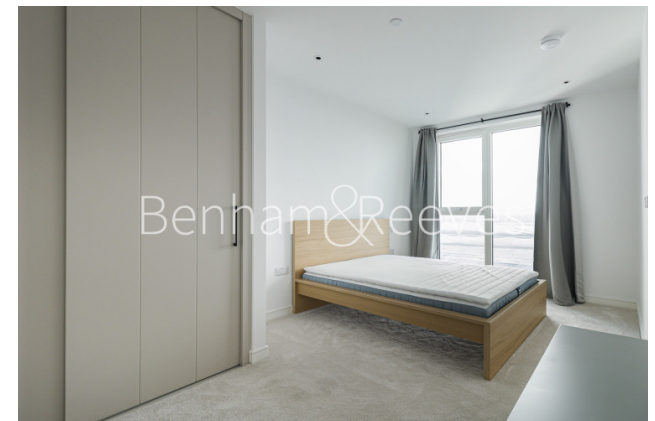
**One bedroom | Parking | Gym | Cinema Room | Residents Lounge | EPC- B | Concierge | Furnished**  
**| Nearby Southall Station (Zone 4)**

For more information about this property,  
please call our Property Management branch on

**020 7319 9740**

Redress & Client Money Protection :

Benham and Reeves are members of The Property Ombudsman redress scheme and have Client Money protection with ARLA Propertymark. You can find more information on our website at <https://www.benhams.com/membership/>



**Benham&Reeves**

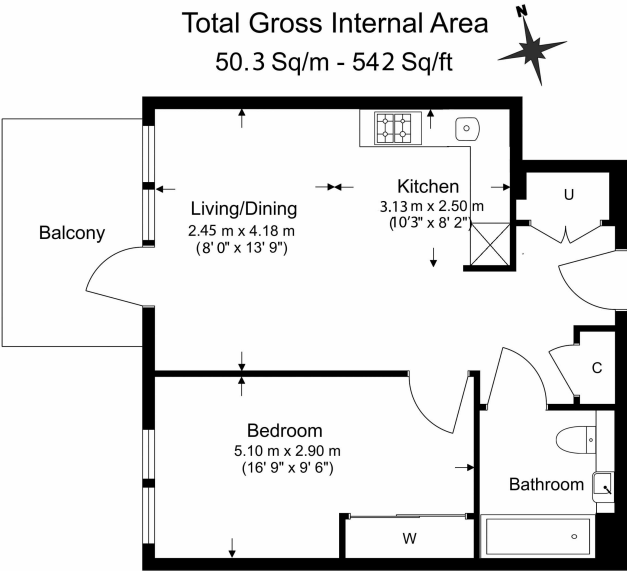




# Viola House, Greenleaf Walk, UB1

£393 per week, £1,703 per month + fees

[www.benhams.com](http://www.benhams.com)



BenhamReeves

Floor Plan measurements are approximate and are for illustrative purposes only. While we do not doubt the floor plans accuracy, we make no guarantee, warranty or representation as to the accuracy and completeness of the floor plan.

01/08/2025, 21:57 Energy performance certificate (EPC) – Find an energy certificate – GOV.UK

Score	Energy rating	Current	Potential
92+	A		
81-91	B	84 B	84 B
69-80	C		
55-68	D		
39-54	E		
21-38	F		
1-20	G		

## London branches open six days a week Mon - Sat

Canary Wharf | City | Colindale | Dartmouth Park | Ealing | Fulham  
Hammersmith | Hampstead | Highgate | Hyde Park | Kensington | Kew  
Knightsbridge | Nine Elms | Shoreditch | Southall | Surrey Quays  
Wapping | Wembley | White City | Woolwich

## International offices

China | Hong Kong SAR | India | Indonesia | Qatar | Malaysia | Middle East |  
Singapore | South Africa | Thailand | Turkey



BenhamReeves