



Benham & Reeves

Burney Street, Greenwich, SE10

£531 per week, £2,300 per month + fees

 1 Bedroom  1 Bathroom  Furnished

Bright and spacious contemporary apartment situated in a desirable development in the heart of Greenwich Town, close to Cutty Sark DLR, Greenwich Market and the River Thames

Please [click here](#) for full detail

Property features

One Bedroom | One Bathroom | Furnished | Concierge Service | Communal Resident Garden | EPC-B | Close to Landmarks such as the Cutty Sark | Greenwich Park & Greenwich Market | Close to Greenwich Station for DLR & National Rail

For more information about this property,
please call our Surrey Quays branch on

020 7740 3050

Redress & Client Money Protection :

Benham and Reeves are members of The Property Ombudsman redress scheme and have Client Money protection with ARLA Propertymark. You can find more information on our website at <https://www.benhamandreeves.com/membership/>



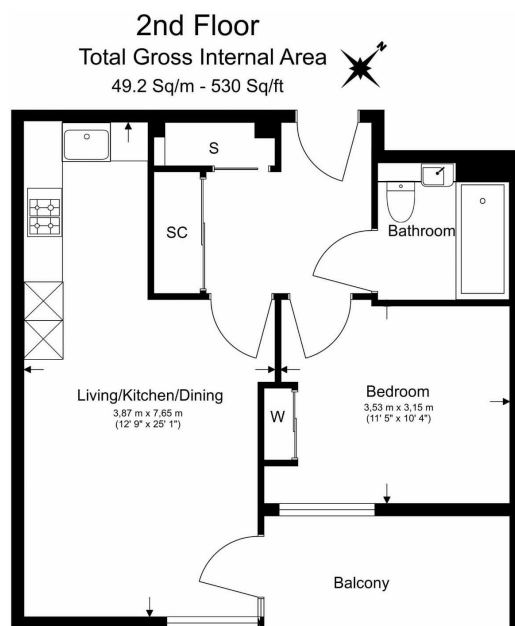
Benham & Reeves



Burney Street, Greenwich, SE10

£531 per week, £2,300 per month + fees

www.benhams.com



Floor Plan measurements are approximate and are for illustrative purposes only. While we do not doubt the floor plans accuracy, we make no guarantee, warranty or representation as to the accuracy and completeness of the floor plan.

Score	Energy rating	Current	Potential
92+	A		
81-91	B	89 B	89 B
69-80	C		
55-68	D		
39-54	E		
21-38	F		
1-20	G		

London branches open six days a week Mon - Sat

Canary Wharf | City | Colindale | Dartmouth Park | Ealing | Fulham
Hammersmith | Hampstead | Highgate | Hyde Park | Kensington | Kew
Knightsbridge | Nine Elms | Shoreditch | Southall | Surrey Quays
Wapping | Wembley | White City | Woolwich

International offices

China | Hong Kong SAR | India | Indonesia | Qatar | Malaysia | Middle East |
Singapore | South Africa | Thailand | Turkey



Benham & Reeves