



Benham & Reeves

Burney Street, Greenwich, SE10

£646 per week, £2,799 per month + fees

 1 Bedroom  1 Bathroom  Furnished

Bright and spacious contemporary apartment situated in a desirable development in the heart of Greenwich Town, close to Cutty Sark DLR, Greenwich Market and the River Thames.

Please [click here](#) for full detail

Property features

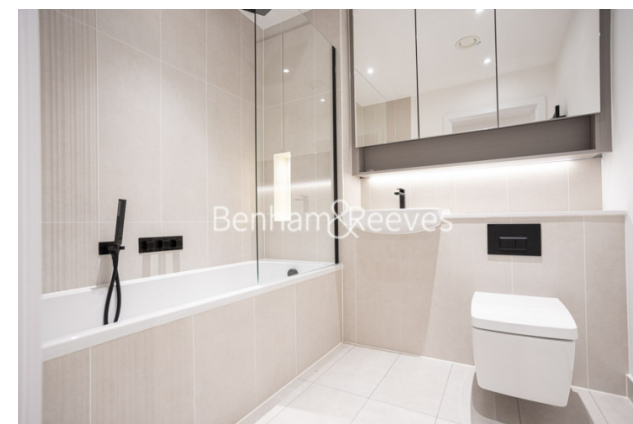
One Bedroom | One Bathroom | Onsite Tesco, Co-op and popular restaurant and café | Residents Gym on-site | Fitted kitchen with modern features | EPC-B | 24hr Concierge, fully maintained communal estate | Bright and spacious | Furnished to a modern and contemporary style | Surrey Quays Station for access into Shoreditch and City

For more information about this property,
please call our Surrey Quays branch on

020 7740 3050

Redress & Client Money Protection :

Benham and Reeves are members of The Property Ombudsman redress scheme and have Client Money protection with ARLA Propertymark. You can find more information on our website at <https://www.benhams.com/membership/>



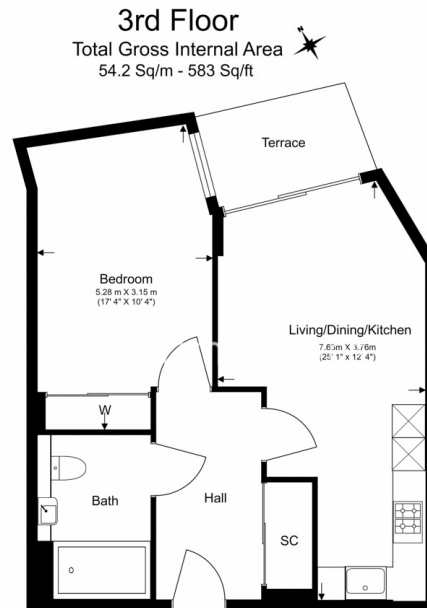
Benham&Reeves



Burney Street, Greenwich, SE10

£646 per week, £2,799 per month + fees

www.benhams.com



Floor Plan measurements are approximate and are for illustrative purposes only. While we do not doubt the floor plans accuracy, we make no guarantee, warranty or representation as to the accuracy and completeness of the floor plan.

Score	Energy rating	Current	Potential
92+	A		
81-91	B	89 B	89 B
69-80	C		
55-68	D		
39-54	E		
21-38	F		
1-20	G		

London branches open six days a week Mon - Sat

Canary Wharf | City | Colindale | Dartmouth Park | Ealing | Fulham
Hammersmith | Hampstead | Highgate | Hyde Park | Kensington | Kew
Knightsbridge | Nine Elms | Shoreditch | Southall | Surrey Quays
Wapping | Wembley | White City | Woolwich

International offices

China | Hong Kong SAR | India | Indonesia | Qatar | Malaysia | Middle East | Pakistan
Singapore | South Africa | Thailand | Turkey



Benham&Reeves