



Benham&Reeves

Burney Street, Greenwich, SE10

£624 per week, £2,704 per month + fees

 2 Bedrooms  2 Bathrooms  Furnished

Beautifully presented apartment with, cycle storage, situated in a bespoke development in the heart of Greenwich. Located close to the amenities of Greenwich Village and an 8-minute walk from Greenwich Station

Please [click here](#) for full detail

Property features

Two Bedrooms | Two Bathrooms | Landscaped Courtyard | Furnished. Fitted Kitchen | Bright and Spacious | EPC-B | Underfloor Heating | 24hr Concierge | Bike storage | Close to Greenwich Park

For more information about this property,
please call our Surrey Quays branch on

020 7740 3050



Redress & Client Money Protection :

Benham and Reeves are members of The Property Ombudsman redress scheme and have Client Money protection with ARLA Propertymark. You can find more information on our website at <https://www.benhams.com/membership/>

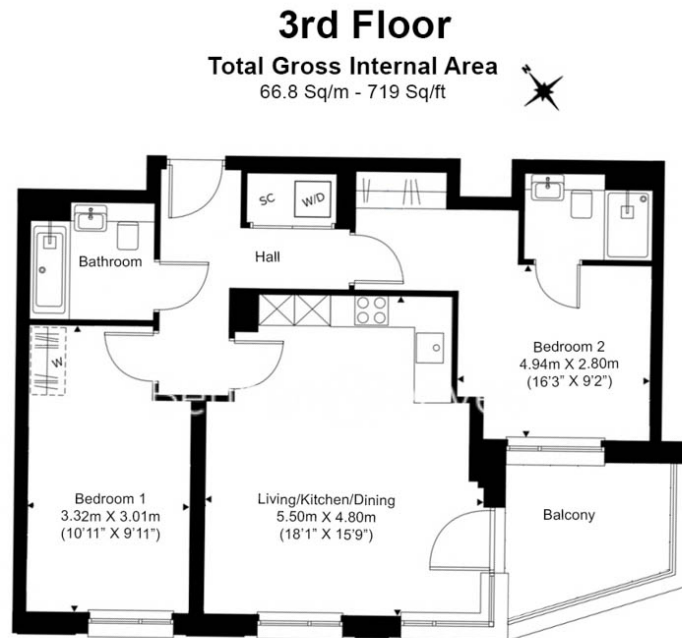
Benham & Reeves



Burney Street, Greenwich, SE10

£624 per week, £2,704 per month + fees

www.benhams.com



Floor Plan measurements are approximate and are for illustrative purposes only. While we do not doubt the floor plans accuracy, we make no guarantee, warranty or representation as to the accuracy and completeness of the floor plan.

London branches open six days a week Mon - Sat

Canary Wharf | City | Colindale | Dartmouth Park | Ealing | Fulham
Hammersmith | Hampstead | Highgate | Hyde Park | Kensington | Kew
Knightsbridge | Nine Elms | Shoreditch | Southall | Surrey Quays
Wapping | Wembley | White City | Woolwich

International offices

China | Hong Kong SAR | India | Israel | Malaysia | Middle East | Pakistan
Qatar | Singapore | South Africa | Thailand | Turkey



Benham & Reeves