



Benham & Reeves

## **New Capital Quay, Greenwich, SE10**

£433 per week, £1,876 per month + fees

🛏 1 Bedroom    🚿 1 Bathroom    🛋 Furnished

Morden one double bedroom apartment located in the sought after New Capital Quay development, benefiting of 24/7 concierge services, and situated near Cutty Sark DLR station.

Please [click here](#) for full detail

## Property features

**Large Double Bedroom | Family Size Bathroom | Floor to Ceiling Windows | Fitted Kitchen | Modern Furnishing | EPC-C | Wood Floors | 24 Hour Concierge | Near Greenwich Town Centre | Cutty Sark DLR Station**

For more information about this property,  
please call our Surrey Quays branch on

**020 7740 3050**

Redress & Client Money Protection :

Benham and Reeves are members of The Property Ombudsman redress scheme and have Client Money protection with ARLA Propertymark. You can find more information on our website at <https://www.benhams.com/membership/>



Benham & Reeves

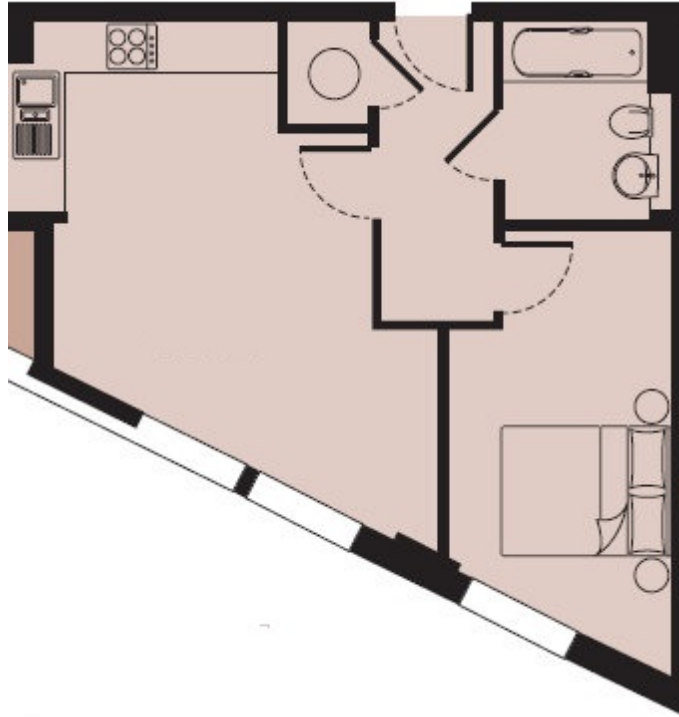




# New Capital Quay, Greenwich, SE10

£433 per week, £1,876 per month + fees

[www.benhams.com](http://www.benhams.com)



Energy Efficiency Rating		
	Current	Potential
Very energy efficient - lower running costs		
(92-100) A		
(81-91) B		
(69-80) C	73	73
(55-68) D		
(39-54) E		
(21-38) F		
(1-20) G		
Not energy efficient - higher running costs		
England & Wales	EU Directive 2002/91/EC	

## London branches open six days a week Mon - Sat

Canary Wharf | City | Colindale | Dartmouth Park | Ealing | Fulham  
Hammersmith | Hampstead | Highgate | Hyde Park | Kensington | Kew  
Knightsbridge | Nine Elms | Shoreditch | Southall | Surrey Quays  
Wapping | Wembley | White City | Woolwich

## International offices

China | Hong Kong SAR | India | Israel | Malaysia | Middle East | Pakistan  
Qatar | Singapore | South Africa | Thailand | Turkey



Benham & Reeves