



Benham & Reeves

River Gardens Walk, Greenwich, SE10

£554 per week, £2,400 per month + fees

 2 Bedrooms  2 Bathrooms  Furnished

Stylish 6th floor apartment with excellent views of the Thames, parking, and good storage, situated within a sought-after development a 15 minute walk from Cutty Sark DLR station and is also easily accessible to North Greenwich Underground Station and Maze Hill Overground Station, which has direct trains into Canary Wharf in 10 minutes and Central London in 15 minutes. EPC-B

Please [click here](#) for full detail

Property features

2 Bedrooms | 2 Bathrooms | Furnished | Parking | On Site Residents Gym | EPC-B | Extra Storage Available | 24-hour Concierge | Open Planned Living | Cutty Sark DLR Station and North Greenwich Underground

For more information about this property,
please call our Surrey Quays branch on

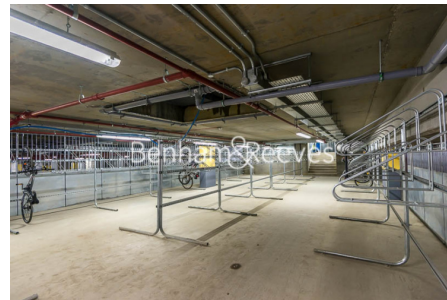
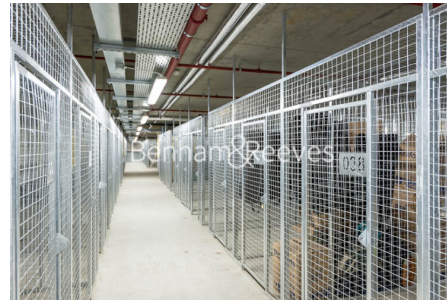
020 7740 3050

Redress & Client Money Protection :

Benham and Reeves are members of The Property Ombudsman redress scheme and have Client Money protection with ARLA Propertymark. You can find more information on our website at <https://www.benhamandreeves.com/membership/>



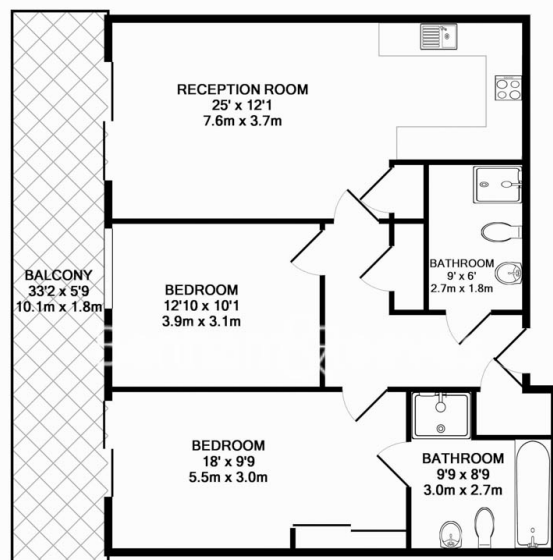
Benham & Reeves



River Gardens Walk, Greenwich, SE10

£554 per week, £2,400 per month + fees

www.benhams.com

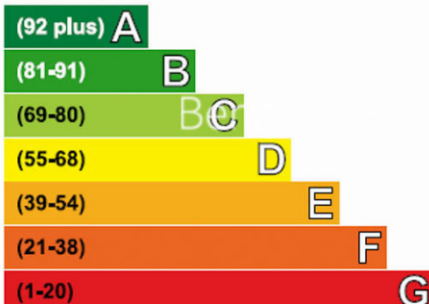


GRANITE APARTMENTS, RIVER WALK, SE10
TOTAL APPROX. FLOOR AREA 817 SQ.FT. (75.9 SQ.M.)

Whilst every attempt has been made to ensure the accuracy of the floor plan contained here, measurements of doors, windows, rooms and any other items are approximate and no responsibility is taken for any error, omission, or mis-statement. This plan is for illustrative purposes only and should be used as such by any prospective purchaser. The services, systems and appliances shown have not been tested and no guarantee as to their operability or efficiency can be given.
Made with Metropix ©2014

Energy Efficiency Rating

Very energy efficient - lower running costs



Current	Potential
85	85

Not energy efficient - higher running costs

London branches open six days a week Mon - Sat

Canary Wharf | City | Colindale | Dartmouth Park | Ealing | Fulham
Hammersmith | Hampstead | Highgate | Hyde Park | Kensington | Kew
Knightsbridge | Nine Elms | Shoreditch | Southall | Surrey Quays
Wapping | Wembley | White City | Woolwich

International offices

China | Hong Kong SAR | India | Indonesia | Qatar | Malaysia | Middle East | Pakistan
Singapore | South Africa | Thailand | Turkey



Benham & Reeves