



Benham & Reeves

Caro Point, Grosvenor Waterside, SW1

£695 per week, £3,012 per month + fees

 1 Bedroom  1 Bathroom  Furnished

A well-presented 527 sq ft ONE-BEDROOM apartment with PRIVATE BALCONY on the 7th floor of the prestigious GROSVENOR WATERSIDE development with 24-Hr Concierge, Luxury Health Club & Spa, on-site cafe & SAINSBURY'S LOCAL. BATTERSEA PARK is a 5 minute walk. VICTORIA & SLOANE SQUARE STATIONS are 5 minutes by bus or a 10 minute walk..

Please [click here](#) for full detail

Property features

1 Bedroom | 1 Bathroom | Open Plan Reception | Furnished | Fitted Gloss Kitchen | EPC-B | 527 Sq Ft | Private Balcony | 24 Hr Concierge & Luxury Health Club | Victoria Underground and National Rail

For more information about this property, please call our Knightsbridge branch on

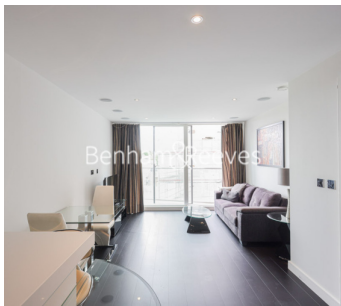
020 7581 2112

Redress & Client Money Protection :

Benham and Reeves are members of The Property Ombudsman redress scheme and have Client Money protection with ARLA Propertymark. You can find more information on our website at <https://www.benhams.com/membership/>



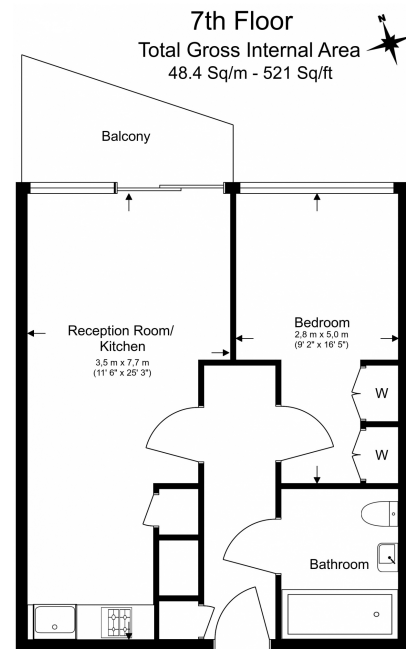
Benham & Reeves



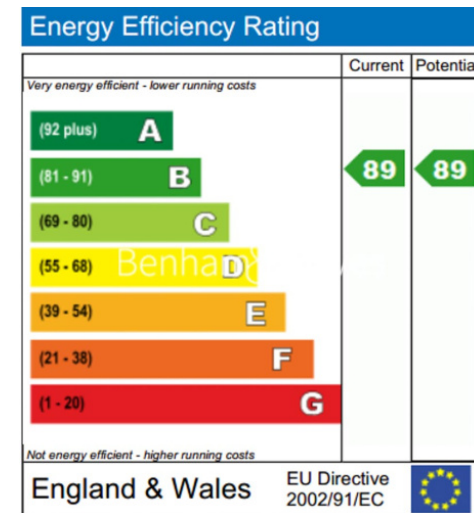
Caro Point, Grosvenor Waterside, SW1

£695 per week, £3,012 per month + fees

www.benhams.com



Floor Plan measurements are approximate and are for illustrative purposes only. While we do not doubt the floor plans accuracy, we make no guarantee, warranty or representation as to the accuracy and completeness of the floor plan.



London branches open six days a week Mon - Sat

Canary Wharf | City | Colindale | Dartmouth Park | Ealing | Fulham
Hammersmith | Hampstead | Highgate | Hyde Park | Kensington | Kew
Knightsbridge | Nine Elms | Shoreditch | Southall | Surrey Quays
Wapping | Wembley | White City | Woolwich



International offices

China | Hong Kong SAR | India | Indonesia | Qatar | Malaysia | Middle East | Pakistan
Singapore | South Africa | Thailand | Turkey

Benham & Reeves