



Benham & Reeves

Caro Point, Grosvenor Waterside, Victoria SW1

£695 per week, £3,012 per month + fees

 1 Bedroom  1 Bathroom  Furnished

A smartly-appointed 527 sq ft ONE-BEDROOM apartment in GROSVENOR WATERSIDE where residents enjoy 24-HR Concierge, a luxury HEALTH CLUB, Sainsbury's market & The Locals Cafe. For commuters, Sloane Square & Victoria Stations are within a short walk or bus ride.

Please [click here](#) for full detail

Property features

1 Bedroom | 24 Hr Concierge | Open Plan Reception | Furnished | Fitted Gloss Kitchen | EPC-C | 527 Sq Ft | Luxury Health Club | On-site Sainsburys & Cafe | Nearby Victoria Underground & National Rail

For more information about this property,
please call our Knightsbridge branch on

020 7581 2112

Redress & Client Money Protection :

Benham and Reeves are members of The Property Ombudsman redress scheme and have Client Money protection with ARLA Propertymark. You can find more information on our website at <https://www.benhams.com/membership/>



Benham & Reeves

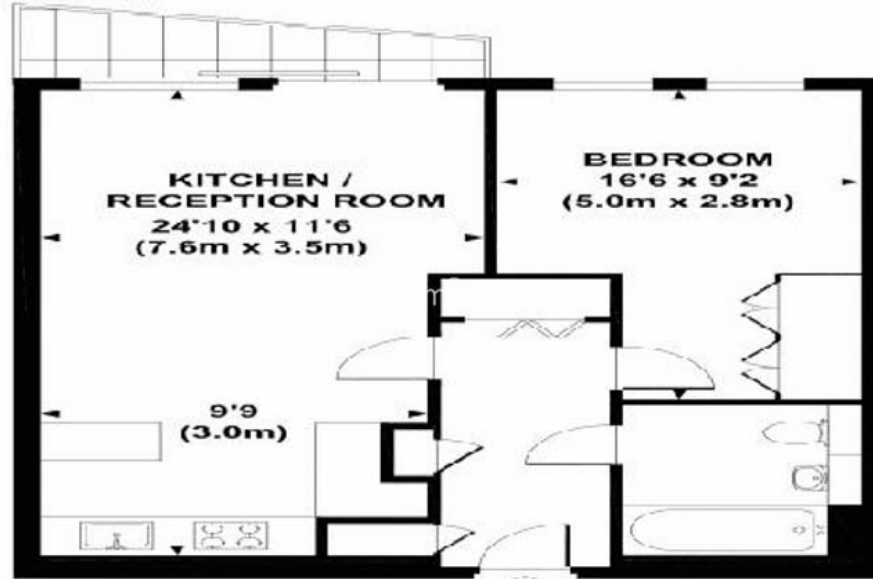


Caro Point, Grosvenor Waterside, Victoria SW1

£695 per week, £3,012 per month + fees

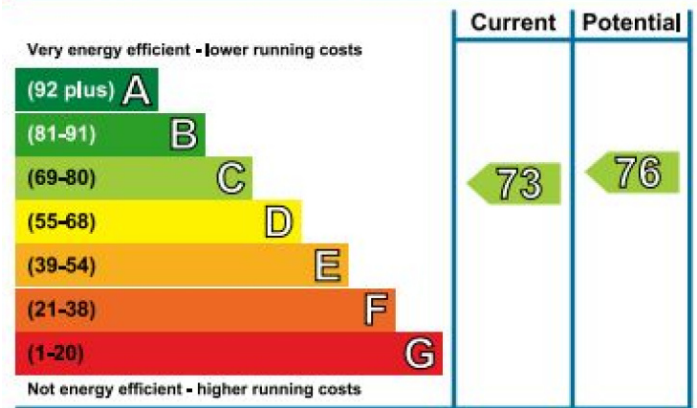
www.benhams.com

Approx. gross internal area
515 Sq Ft. / 48 Sq M.



FIFTH FLOOR

Energy Efficiency Rating



London branches open six days a week Mon - Sat

Canary Wharf | City | Colindale | Dartmouth Park | Ealing | Fulham
Hammersmith | Hampstead | Highgate | Hyde Park | Kensington | Kew
Knightsbridge | Nine Elms | Shoreditch | Southall | Surrey Quays
Wapping | Wembley | White City | Woolwich

International offices

China | Hong Kong SAR | India | Indonesia | Qatar | Malaysia | Middle East | Pakistan
Singapore | South Africa | Thailand | Turkey

