



Benham & Reeves

Hepworth Court, Grosvenor Waterside, SW1W

£750 per week, £3,250 per month + fees

 1 Bedroom  1 Bathroom  Furnished

A smartly-presented 596 Sq Ft ONE-BEDROOM apartment with floor-to-ceiling windows and private BALCONY in GROSVENOR WATERSIDE. Residents benefit from 24 Hr CONCIERGE, FITNESS SUITE & SPA, On-Site Sainsburys & Coffee Shop. BATTERSEA PARK is just minutes away. SLOANE SQUARE & VICTORIA STATIONS nearby.

Please [click here](#) for full detail

Property features

1 Bedroom | Open Plan Reception | 24 Hour Concierge | Health Club & Spa | On Site Sainsburys | EPC-C | Private Balcony | Victoria National Rail Station | Sloane Square Underground Station | Battersea Park Overground Station

For more information about this property,
please call our Knightsbridge branch on

020 7581 2112



Redress & Client Money Protection :

Benham and Reeves are members of The Property Ombudsman redress scheme and have Client Money protection with ARLA Propertymark. You can find more information on our website at <https://www.benham.com/membership/>

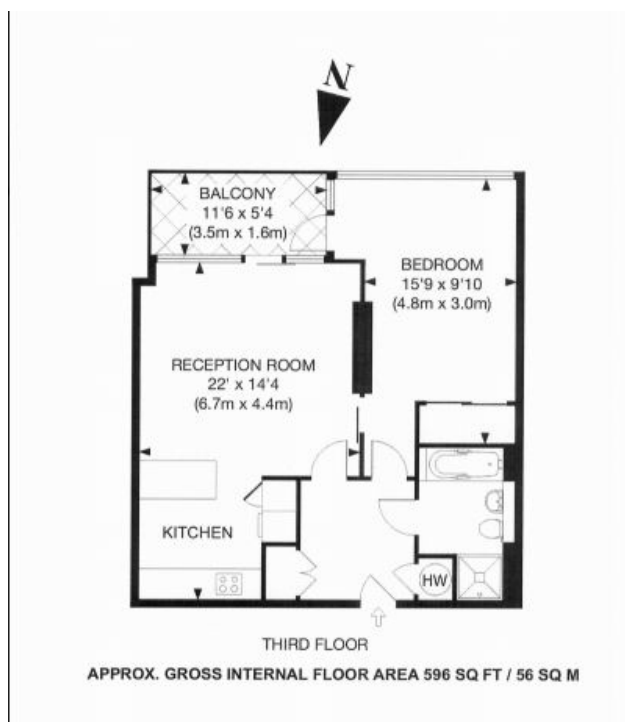
Benham & Reeves



Hepworth Court, Grosvenor Waterside, SW1W

£750 per week, £3,250 per month + fees

www.benhams.com



Score	Energy rating	Current	Potential
92+	A		
81-91	B		
69-80	C	77 c	79 c
55-68	D		
39-54	E		
21-38	F		
1-20	G		

London branches open six days a week Mon - Sat

Canary Wharf | City | Colindale | Dartmouth Park | Ealing | Fulham
Hammersmith | Hampstead | Highgate | Hyde Park | Kensington | Kew
Knightsbridge | Nine Elms | Shoreditch | Southall | Surrey Quays
Wapping | Wembley | White City | Woolwich

International offices

China | Hong Kong SAR | India | Israel | Malaysia | Middle East | Pakistan
Qatar | Singapore | South Africa | Thailand | Turkey

