



Benham & Reeves

**Longfield Avenue, Ealing, W5**

£508 per week, £2,201 per month + fees

 1 Bedroom    1 Bathroom    Furnished

A stylish 2nd floor apartment situated in a popular development, with gym and swimming pool, in Ealing, a brief walk from Ealing Broadway Underground Station.

Please [click here](#) for full detail

## Property features

**1 Bedroom | 1 Bathroom | Reception | Furnished | Fitted Kitchen | EPC-B | Swimming pool & gym  
| 24 Hour Concierge | Nearby Ealing Broadway Station**

For more information about this property,  
please call our Ealing branch on

**020 8280 0140**

Redress & Client Money Protection :

Benham and Reeves are members of The Property Ombudsman redress scheme and have Client Money protection with ARLA Propertymark. You can find more information on our website at <https://www.benhams.com/membership/>



Benham&Reeves

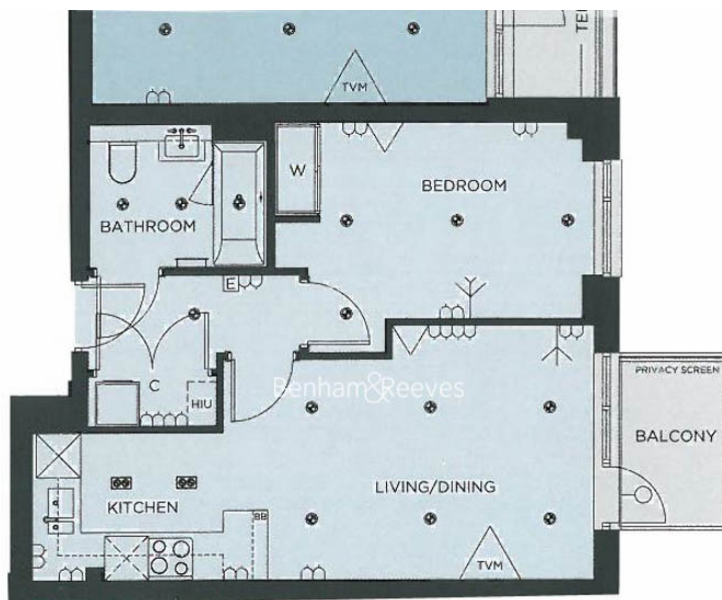




# Longfield Avenue, Ealing, W5

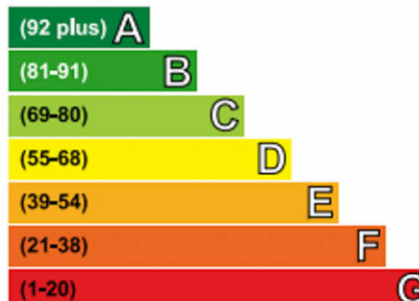
£508 per week, £2,201 per month + fees

[www.benhams.com](http://www.benhams.com)



## Energy Efficiency Rating

Very energy efficient • lower running costs



Current	Potential
82	82

## London branches open six days a week Mon - Sat

Canary Wharf | City | Colindale | Dartmouth Park | Ealing | Fulham  
Hammersmith | Hampstead | Highgate | Hyde Park | Kensington | Kew  
Knightsbridge | Nine Elms | Shoreditch | Southall | Surrey Quays  
Wapping | Wembley | White City | Woolwich

## International offices

China | Hong Kong SAR | India | Israel | Malaysia | Middle East | Pakistan  
Qatar | Singapore | South Africa | Thailand | Turkey



Benham & Reeves