



Benham & Reeves

Disraeli Road, Hammersmith, SW15

£635 per week, £2,750 per month + fees

 2 Bedrooms  2 Bathrooms  Furnished

Recently refurbished 1st floor apartment set in a detached period house conversion on a residential street in Putney, within walking distance from East Putney Underground Station (District line).

Please [click here](#) for full detail

Property features

Newly refurbished 2 Double Bedroom Apartment | Wooden Flooring Throughout | Luxurious 2 x Bathrooms | Close to Local Amenities | Fully Fitted Kitchen Integrated with Well-Known Appliances | EPC-D | fully fitted kitchen | Offered on unfurnished basis | Private Balcony | Nearby East Putney Underground Station & Putney Overground

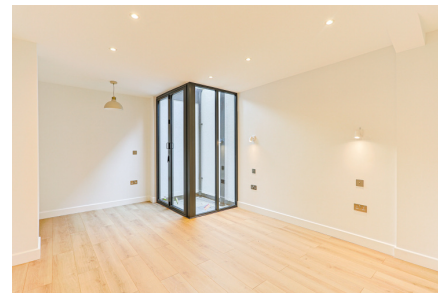
For more information about this property,
please call our Hammersmith branch on

020 8600 0960

Redress & Client Money Protection :
Benham and Reeves are members of The Property Ombudsman redress scheme and have Client Money protection with ARLA Propertymark.
You can find more information on our website at <https://www.benhams.com/membership/>



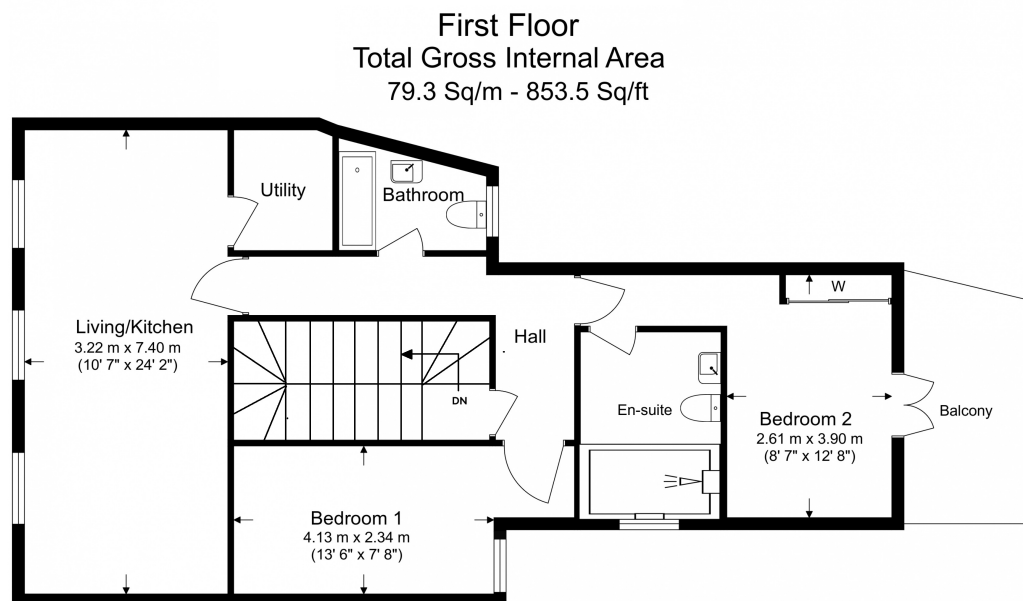
Benham & Reeves



Disraeli Road, Hammersmith, SW15

£635 per week, £2,750 per month + fees

www.benhams.com



Benham & Reeves

Floor Plan measurements are approximate and are for illustrative purposes only. While we do not doubt the floor plans accuracy, we make no guarantee, warranty or representation as to the accuracy and completeness of the floor plan.

Score	Energy rating	Current	Potential
92+	A		
81-91	B		
69-80	C		80 C
55-68	D		
39-54	E	51 E	
21-38	F		
1-20	G		

London branches open six days a week Mon - Sat

Canary Wharf | City | Colindale | Dartmouth Park | Ealing | Fulham
Hammersmith | Hampstead | Highgate | Hyde Park | Kensington | Kew
Knightsbridge | Nine Elms | Shoreditch | Southall | Surrey Quays
Wapping | Wembley | White City | Woolwich

International offices

China | Hong Kong SAR | India | Indonesia | Qatar | Malaysia | Middle East | Pakistan
Singapore | South Africa | Thailand | Turkey



Benham & Reeves