



Benham & Reeves

Copse Hill, Hammersmith, SW20

£3,000 per week, £13,000 per month + fees

🛏 5 Bedrooms 🚿 4 Bathrooms 🛋 Furnished

A large luxury family home, with garden, double garage, and patio, behind electric gates located close to Wimbledon Common, Wimbledon Village and the prestigious King's College School. Heathrow and Gatwick Airports are both accessible via the A3 and M25 motorways and two train stations offering connections to Central London in just 20 minutes.

Please [click here](#) for full detail

Property features

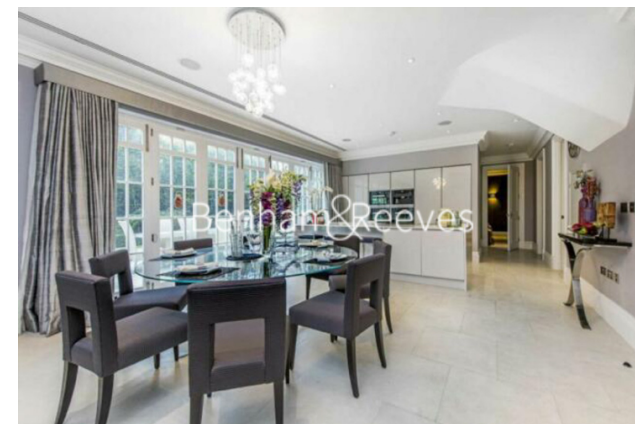
Luxury & Modern Detached Newly Refurbished House | Integrated Speaker System & Luxury High Gloss Kitchen | 4500 sq ft | Securely gated property | Five Double Bedrooms with Ensuite Bathrooms | EPC-B | Large open plan kitchen dining room | Large landscaped garden | Private parking for multiple cars | Nearby Southfields Station

For more information about this property, please call our Hammersmith branch on

020 8600 0960

Redress & Client Money Protection :

Benham and Reeves are members of The Property Ombudsman redress scheme and have Client Money protection with ARLA Propertymark. You can find more information on our website at <https://www.benhamandreeves.com/membership/>



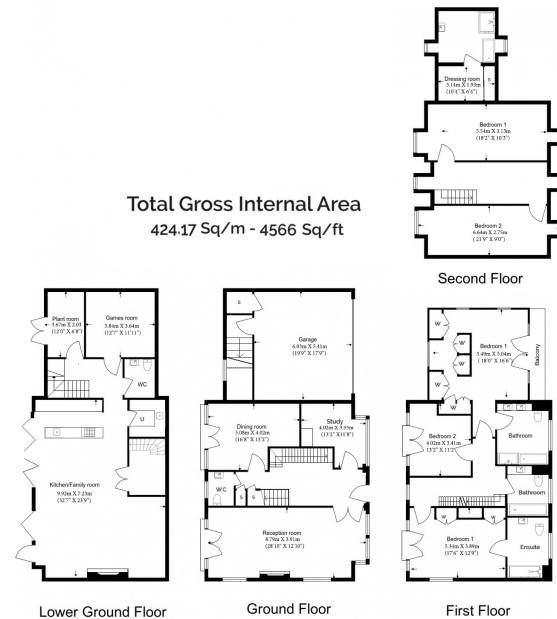
Benham & Reeves



Copse Hill, Hammersmith, SW20

£3,000 per week, £13,000 per month + fees

www.benhams.com



Floor Plan measurements are approximate and are for illustrative purposes only. While we do not doubt the floor plans accuracy, we make no guarantee, warranty or representation as to the accuracy and completeness of the floor plan.

London branches open six days a week Mon - Sat

Canary Wharf | City | Colindale | Dartmouth Park | Ealing | Fulham
Hammersmith | Hampstead | Highgate | Hyde Park | Kensington | Kew
Knightsbridge | Nine Elms | Shoreditch | Southall | Surrey Quays
Wapping | Wembley | White City | Woolwich

International offices

China | Hong Kong SAR | India | Indonesia | Qatar | Malaysia | Middle East | Pakistan
Singapore | South Africa | Thailand | Turkey



Benham & Reeves