



Benham & Reeves

Fulham Reach, Hammersmith, W6

£1,250 per week, £5,417 per month + fees

 3 Bedrooms  3 Bathrooms  Unfurnished

Luxurious, large apartment in the heart of Hammersmith, with access to a private members club offering a host of onsite facilities. The location connects to a series of Thames- side 'villages', including leafy Chiswick and picturesque Barnes, as well as being within quick access of Chelsea, Notting Hill, and Knightsbridge. Perfectly located for Hammersmith (Piccadilly and District lines) underground station.

Please [click here](#) for full detail

Property features

3 Bedrooms | 3 Bathrooms | Reception | Fitted Kitchen | Open plan with breakfast bar | EPC-B | Close to the Local Amenities | Landscaped podium gardens | Nearby Hammersmith tube station

For more information about this property, please call our Hammersmith branch on

020 8600 0960

Redress & Client Money Protection :

Benham and Reeves are members of The Property Ombudsman redress scheme and have Client Money protection with ARLA Propertymark. You can find more information on our website at <https://www.benhams.com/membership/>



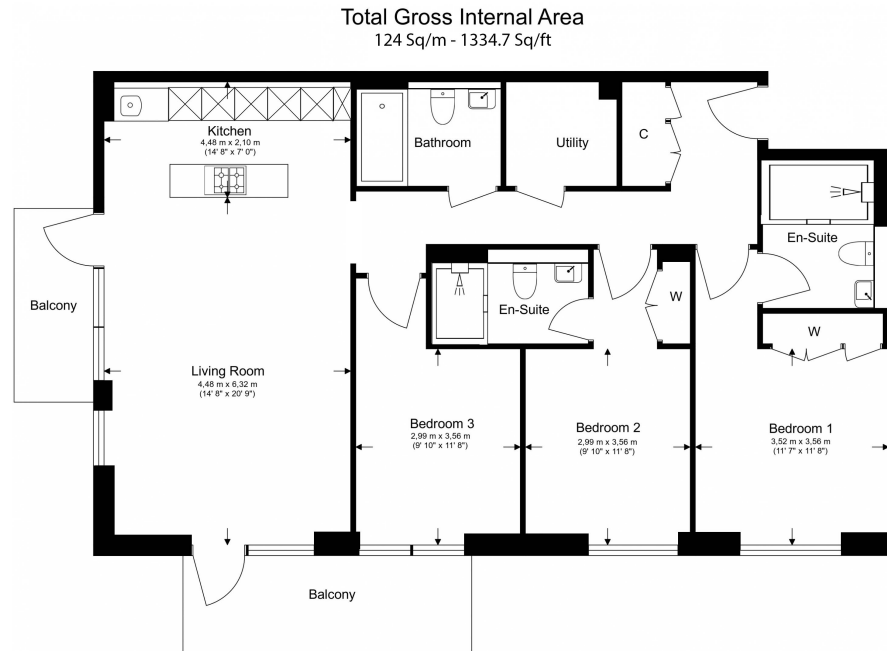
Benham & Reeves



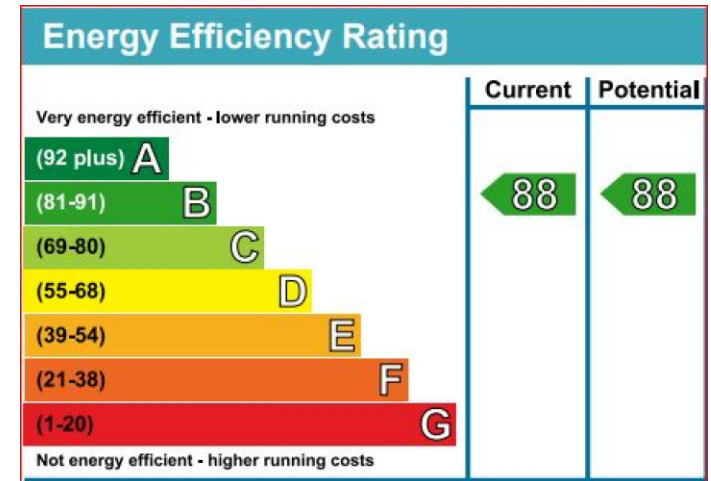
Fulham Reach, Hammersmith, W6

£1,250 per week, £5,417 per month + fees

www.benhams.com



Floor Plan measurements are approximate and are for illustrative purposes only. While we do not doubt the floor plans accuracy, we make no guarantee, warranty or representation as to the accuracy and completeness of the floor plan.



London branches open six days a week Mon - Sat

Canary Wharf | City | Colindale | Dartmouth Park | Ealing | Fulham
Hammersmith | Hampstead | Highgate | Hyde Park | Kensington | Kew
Knightsbridge | Nine Elms | Shoreditch | Southall | Surrey Quays
Wapping | Wembley | White City | Woolwich

International offices

China | Hong Kong SAR | India | Indonesia | Qatar | Malaysia | Middle East |
Singapore | South Africa | Thailand | Turkey

