



Benham & Reeves

Faulkner House, Hammersmith, W6

£800 per week, £3,467 per month + fees

 2 Bedrooms  2 Bathrooms 
Furnished/UnFurnished

Large luxury apartment set on the 6th floor apartment in Faulkner House situated in the prestigious Fulham Reach development in Hammersmith. The property is ideally located within walking distance from Hammersmith tube station.

Please [click here](#) for full detail

Property features

2 Double Bedroom Apartment with Built-in Wardrobe | 24 Hr Concierge / 24 Hr Security / Communal Gardens | Fully Fitted Kitchen Integrated with Well-Known Appliances | Double Reception Room with Dining Area | Air Ventilation / Underfloor Heating / Air Conditioning | EPC-B | Utility Room /Luxurious 2 x Bathrooms | Quality Furnished /LED Spotlights /Sizable Private Balcony | Parking can be arranged at a separate cost | Nearby Hammersmith Tube Station

For more information about this property,
please call our Hammersmith branch on

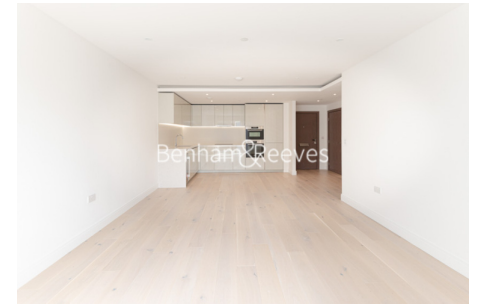
020 8600 0960

Redress & Client Money Protection :

Benham and Reeves are members of The Property Ombudsman redress scheme and have Client Money protection with ARLA Propertymark. You can find more information on our website at <https://www.benhams.com/membership/>



Benham & Reeves

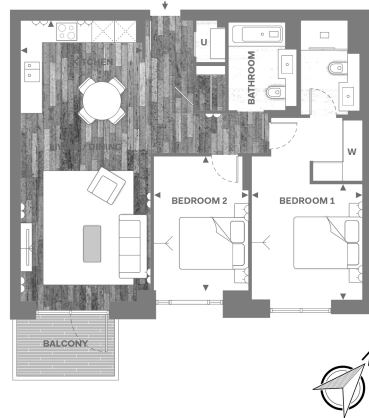


Faulkner House, Hammersmith, W6

£800 per week, £3,467 per month + fees

www.benhams.com

5th Floor
Approx gross internal area: 83sq/ft - 890sq/m



Living / Dining	3.84m x 5.66m	12'7" x 18'3"
Kitchen	3.58m x 2.74m	11'9" x 9'
Bedroom 1	3.27m x 3.39m	10'9" x 11'1"
Bedroom 2	2.75m x 3.93m	9' x 12'11"
Balcony	4.75sqm	51.13sqft

Whilst every attempt has been made to ensure the accuracy of the floor plan contained here, measurements of doors, windows, rooms and any other items are approximate and no responsibility is taken for any error, omission, or misstatement. This plan is for illustrative purposes only and should be used as such by any prospective purchaser. The services, systems and appliances shown have not been tested and no guarantee as to their operability or efficiency can be given.
Made with Metropix 02016

Score	Energy rating	Current	Potential
92+	A		
81-91	B	85 B	85 B
69-80	C		
55-68	D		
39-54	E		
21-38	F		
1-20	G		

London branches open six days a week Mon - Sat

Canary Wharf | City | Colindale | Dartmouth Park | Ealing | Fulham
Hammersmith | Hampstead | Highgate | Hyde Park | Kensington | Kew
Knightsbridge | Nine Elms | Shoreditch | Southall | Surrey Quays
Wapping | Wembley | White City | Woolwich

International offices

China | Hong Kong SAR | India | Indonesia | Qatar | Malaysia | Middle East |
Singapore | South Africa | Thailand | Turkey



Benham & Reeves