



Benham & Reeves

## **Crisp Road, Hammersmith, W6**

£675 per week, £2,925 per month + fees

 1 Bedroom    1 Bathroom    Furnished

A wonderful, extremely well positioned apartment with private courtyard and private entrance situated in Clareville Grove, South Kensington close to good transport links.

Please [click here](#) for full detail

## Property features

**1 Bedroom | 1 Bathroom | Reception | Furnished | Fitted Kitchen | EPC-B | Riverside Development | Landscaped Podium Gardens | Nearby Hammersmith Tube Station**

For more information about this property,  
please call our Hammersmith branch on

**020 8600 0960**

Redress & Client Money Protection :

Benham and Reeves are members of The Property Ombudsman redress scheme and have Client Money protection with ARLA Propertymark. You can find more information on our website at <https://www.benhamandreeves.com/membership/>



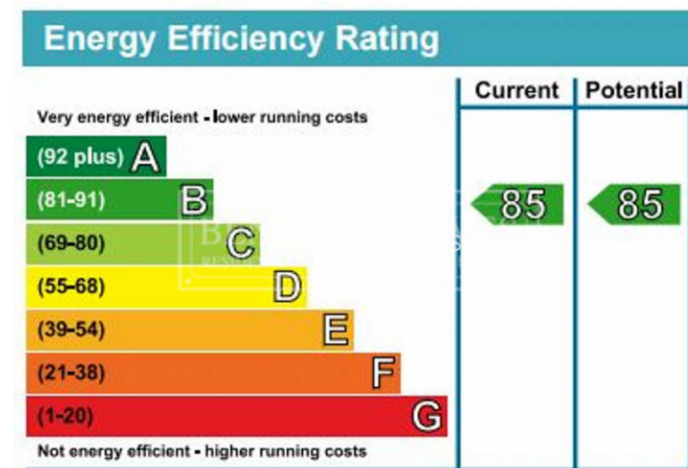
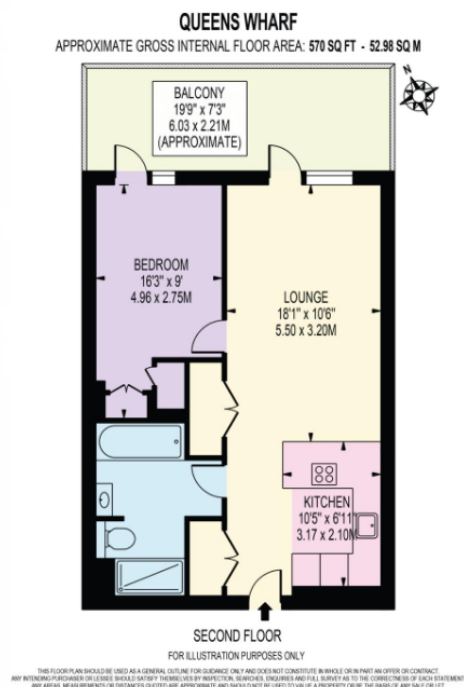
Benham & Reeves



# Crisp Road, Hammersmith, W6

£675 per week, £2,925 per month + fees

[www.benhams.com](http://www.benhams.com)



## London branches open six days a week Mon - Sat

Canary Wharf | City | Colindale | Dartmouth Park | Ealing | Fulham  
Hammersmith | Hampstead | Highgate | Hyde Park | Kensington | Kew  
Knightsbridge | Nine Elms | Shoreditch | Southall | Surrey Quays  
Wapping | Wembley | White City | Woolwich

## International offices

China | Hong Kong SAR | India | Indonesia | Qatar | Malaysia | Middle East | Pakistan  
Singapore | South Africa | Thailand | Turkey



Benham & Reeves