



Benham & Reeves

Parrs Way, Hammersmith, W6

£912 per week, £3,950 per month + fees

 2 Bedrooms  2 Bathrooms  Furnished

A stylish 6th floor apartment situated in a popular Riverside development, with a host of onsite amenities, in Fulham, close to the amenities of Hammersmith. Located close to excellent transport facilities, with Hammersmith (Zone 2) underground station within walking distance.

Please [click here](#) for full detail

Property features

2 bedroom 2 bathroom | Comfort Cooling, Wall heating and Underfloor heating | 2 x Luxury Bathroom | Contemporary Open-Plan Fitted Kitchen | Wood Floor throughout | EPC-B | Very Sizeable Open-Plan Reception with Hardwood Floors | Wall Mounted TV / Large Private Terrace | Long Hallway / Utility Room | Moments from Hammersmith Underground Station & Local Buses

For more information about this property,
please call our Hammersmith branch on

020 8600 0960

Redress & Client Money Protection :

Benham and Reeves are members of The Property Ombudsman redress scheme and have Client Money protection with ARLA Propertymark. You can find more information on our website at <https://www.benhamandreeves.com/membership/>



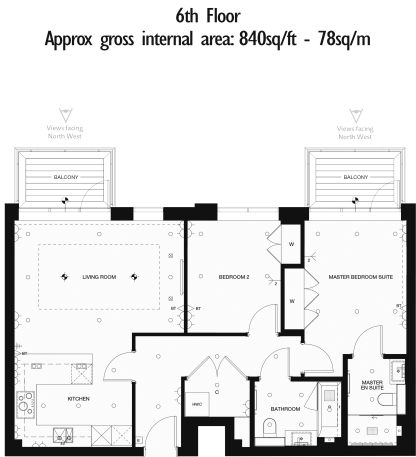
Benham & Reeves



Parrs Way, Hammersmith, W6

£912 per week, £3,950 per month + fees

www.benhams.com



| | | |
|----------------------|---|---------------|
| Living Room | 5.00m ² x 3.94m ² | 16'6" x 13'0" |
| Kitchen | 3.47m ² x 2.75m ² | 11'6" x 9'0" |
| Master Bedroom Suite | 3.01m ² x 3.95m ² | 10'0" x 13'0" |
| Bedroom 2 | 2.75m ² x 3.32m ² | 9'0" x 11'0" |

Whilst every attempt has been made to ensure the accuracy of the floor plan contained here, measurements of doors, windows, rooms and any other items are approximate and no responsibility is taken for any error, omission, or mis-statement. This plan is for illustrative purposes only and should be used as such by any prospective purchaser. The services, systems and appliances shown have not been tested and no guarantee as to their capability or efficiency can be given.
Made with Metronix ©2018

| Score | Energy rating | Current | Potential |
|-------|---------------|---------|-----------|
| 92+ | A | | |
| 81-91 | B | 85 B | 85 B |
| 69-80 | C | | |
| 55-68 | D | | |
| 39-54 | E | | |
| 21-38 | F | | |
| 1-20 | G | | |

London branches open six days a week Mon - Sat

Canary Wharf | City | Colindale | Dartmouth Park | Ealing | Fulham
Hammersmith | Hampstead | Highgate | Hyde Park | Kensington | Kew
Knightsbridge | Nine Elms | Shoreditch | Southall | Surrey Quays
Wapping | Wembley | White City | Woolwich

International offices

China | Hong Kong SAR | India | Indonesia | Qatar | Malaysia | Middle East |
Singapore | South Africa | Thailand | Turkey



Benham&Reeves