



Benham & Reeves

Sovereign Court, Hammersmith, W6

£850 per week, £3,683 per month + fees

 2 Bedrooms  2 Bathrooms  Unfurnished

Luxury 2nd floor, air-conditioned apartment situated within a prestigious development in Hammersmith, located within walking distance from Hammersmith Underground Station (Circle, District, Piccadilly & Hammersmith, and City lines).

Please [click here](#) for full detail

Property features

2 Bedroom, 2 Bathroom, furnished flat located on the 2nd floor | Wood Floor throughout | Wall Mounted TV x 2 / Large Private Terrace | 2 x Cream Stone Finish Luxury Bathroom | Contemporary Open-Plan Fitted Kitchen | EPC-B | Long Hallway / Utility Room | Very Sizeable Open-Plan Reception with Hardwood Floors | 24 hr Concierge / Private Residents' Gym / Communal Garden | Moments from Hammersmith Underground Station & Local Buses

For more information about this property, please call our Hammersmith branch on

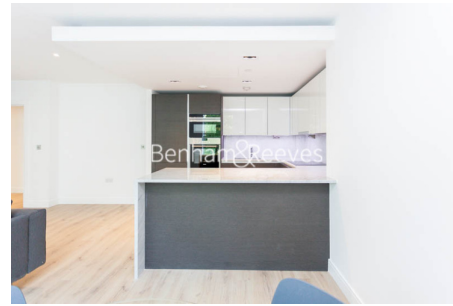
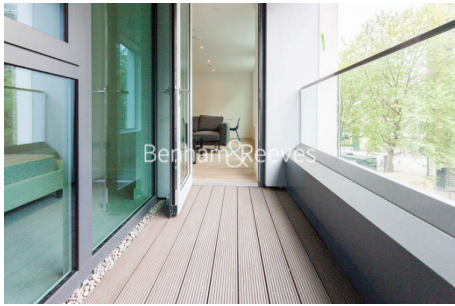
020 8600 0960

Redress & Client Money Protection :

Benham and Reeves are members of The Property Ombudsman redress scheme and have Client Money protection with ARLA Propertymark. You can find more information on our website at <https://www.benhamandreeves.com/membership/>



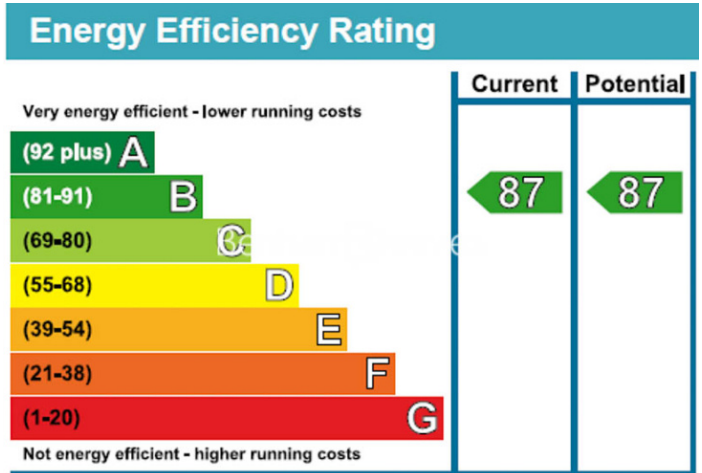
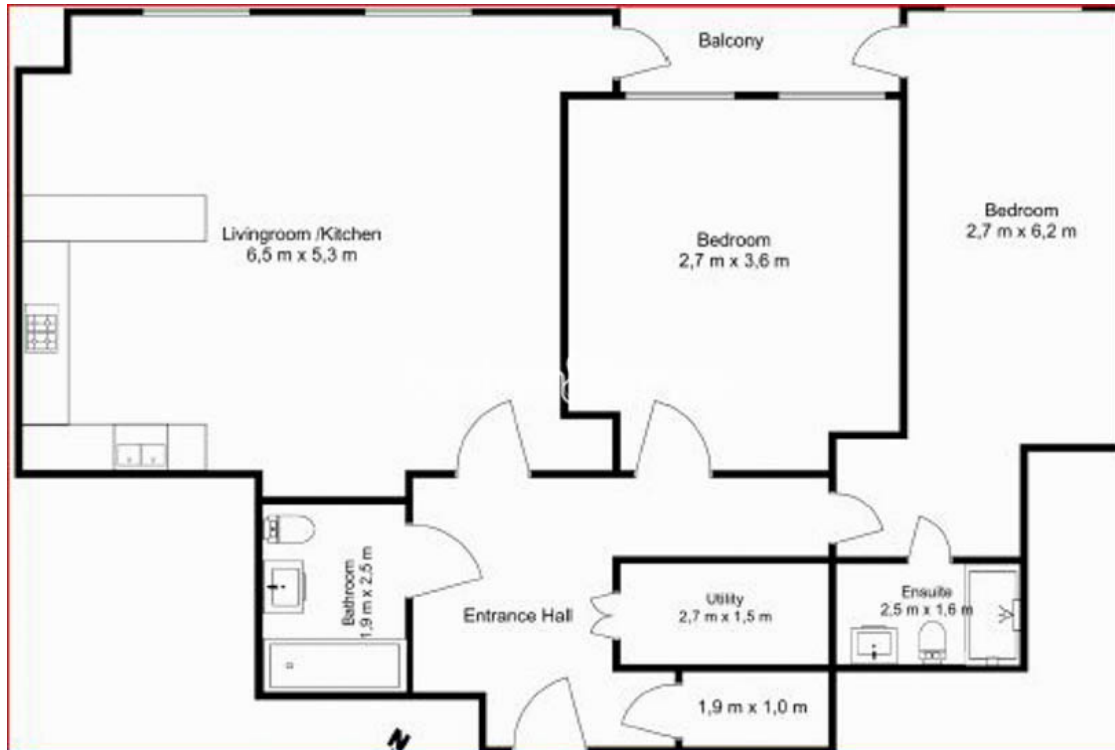
Benham & Reeves



Sovereign Court, Hammersmith, W6

£850 per week, £3,683 per month + fees

www.benhams.com



London branches open six days a week Mon - Sat

Canary Wharf | City | Colindale | Dartmouth Park | Ealing | Fulham
Hammersmith | Hampstead | Highgate | Hyde Park | Kensington | Kew
Knightsbridge | Nine Elms | Shoreditch | Southall | Surrey Quays
Wapping | Wembley | White City | Woolwich

International offices

China | Hong Kong SAR | India | Indonesia | Qatar | Malaysia | Middle East | Pakistan
Singapore | South Africa | Thailand | Turkey

