



Benham & Reeves

Fulham Reach, Hammersmith, W6

£831 per week, £3,601 per month + fees

 2 Bedrooms  2 Bathrooms  Furnished

Luxurious apartment situated within a popular Riverside development with access to private members club with a host of amenities. Ideally located close to the local amenities of Fulham as well as Hammersmith (Piccadilly and District lines) underground station which has excellent travel links around London.

Please [click here](#) for full detail

Property features

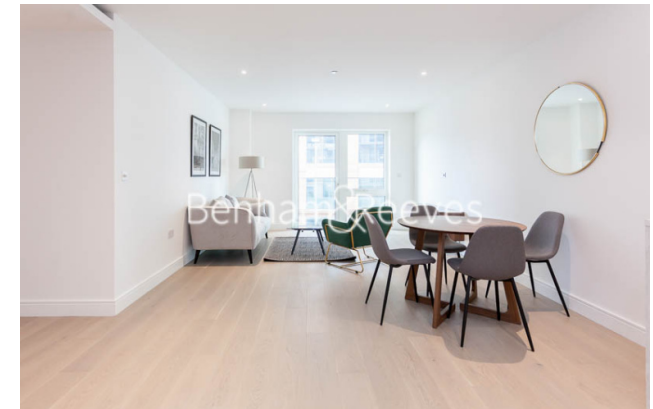
Fulham Reach | 24h Concierge | Modern Kitchen | Landscaped gardens | Wooden flooring & Private balcony | EPC-B | Close to local Amenities | Fully furnished & Gym & swimming pool | Hammersmith underground station

For more information about this property, please call our Hammersmith branch on

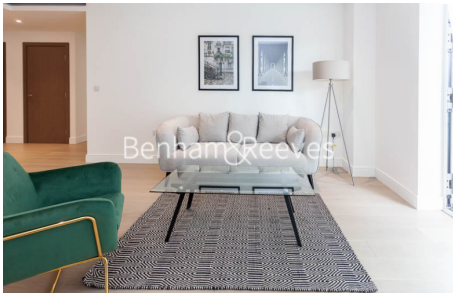
020 8600 0960

Redress & Client Money Protection :

Benham and Reeves are members of The Property Ombudsman redress scheme and have Client Money protection with ARLA Propertymark. You can find more information on our website at <https://www.benhams.com/membership/>



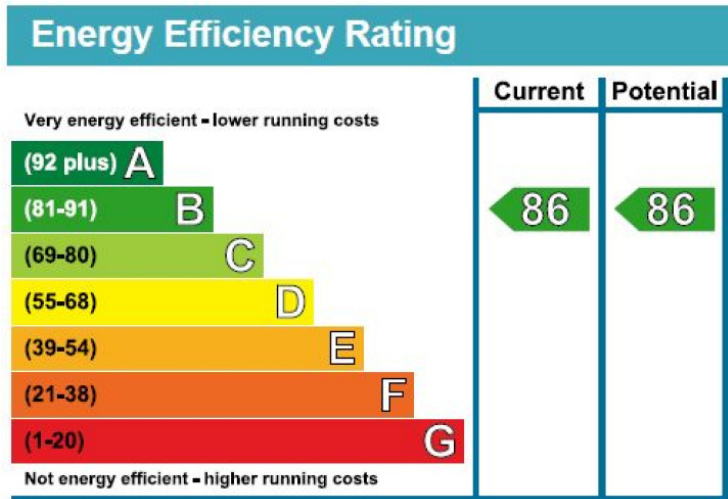
Benham & Reeves



Fulham Reach, Hammersmith, W6

£831 per week, £3,601 per month + fees

www.benhams.com



London branches open six days a week Mon - Sat

Canary Wharf | City | Colindale | Dartmouth Park | Ealing | Fulham
Hammersmith | Hampstead | Highgate | Hyde Park | Kensington | Kew
Knightsbridge | Nine Elms | Shoreditch | Southall | Surrey Quays
Wapping | Wembley | White City | Woolwich

International offices

China | Hong Kong SAR | India | Indonesia | Qatar | Malaysia | Middle East |
Singapore | South Africa | Thailand | Turkey

