



Benham&Reeves

Palace Wharf, Hammersmith, W6

£1,025 per week, £4,442 per month + fees

 2 Bedrooms  2 Bathrooms  Furnished

A beautiful interior designed 1st floor apartment, facing the courtyard, situated within a newly converted warehouse style, gated development on the River Thames. Located conveniently close to several transport links including Hammersmith Overground and Underground Station, Barons Court, Putney Bridge and Fulham Broadway Underground Stations

Please [click here](#) for full detail

Property features

2 Bedrooms | 2 Bathrooms | Reception | Furnished | Fitted Kitchen | EPC-D | Outside Space | Car Park | Nearby Hammersmith Overground, Barons Court, Fulham Broadway

For more information about this property,
please call our Hammersmith branch on

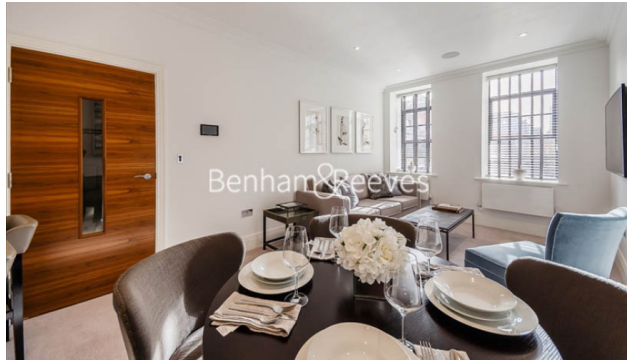
020 8600 0960



Redress & Client Money Protection :

Benham and Reeves are members of The Property Ombudsman redress scheme and have Client Money protection with ARLA Propertymark. You can find more information on our website at <https://www.benhams.com/membership/>

Benham & Reeves

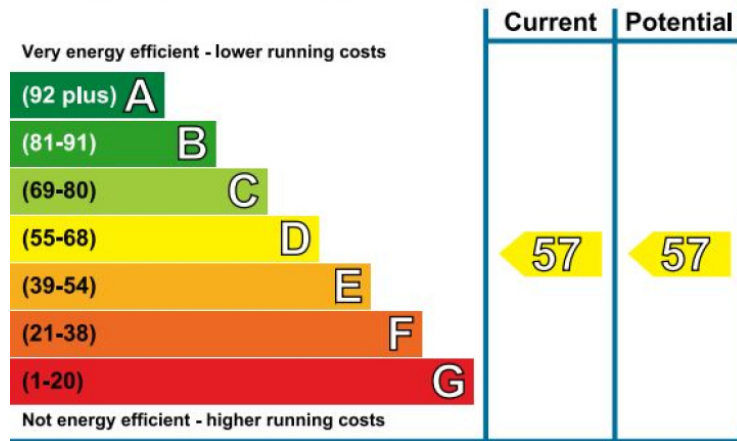


Palace Wharf, Hammersmith, W6

£1,025 per week, £4,442 per month + fees

www.benhams.com

Energy Efficiency Rating



London branches open six days a week Mon - Sat

Canary Wharf | City | Colindale | Dartmouth Park | Ealing | Fulham
Hammersmith | Hampstead | Highgate | Hyde Park | Kensington | Kew
Knightsbridge | Nine Elms | Shoreditch | Southall | Surrey Quays
Wapping | Wembley | White City | Woolwich

International offices

China | Hong Kong SAR | India | Indonesia | Qatar | Malaysia | Middle East | Pakistan
Singapore | South Africa | Thailand | Turkey

