



Benham & Reeves

Chancellor Road, Hammersmith, W6

£970 per week, £4,203 per month + fees

 4 Bedrooms  3 Bathrooms 
Furnished/UnFurnished

Large, refurbished family home (complete in November 2022) set over two floors situated on a quiet road with views over a park and five minutes from Hammersmith Tube Station.

Please [click here](#) for full detail

Property features

Fully refurbished house | Unfurnished/furnished | Split over two levels | Three bathrooms | Parking | EPC-D | One en-suite and 2 extra bathrooms | Short walk away from the Thames river | Large Reception & Dining Space with Plenty of Built-in Storage | Close to Hammersmith station

For more information about this property,
please call our Hammersmith branch on

020 8600 0960

Redress & Client Money Protection :

Benham and Reeves are members of The Property Ombudsman redress scheme and have Client Money protection with ARLA Propertymark. You can find more information on our website at <https://www.benhamandreeves.com/membership/>



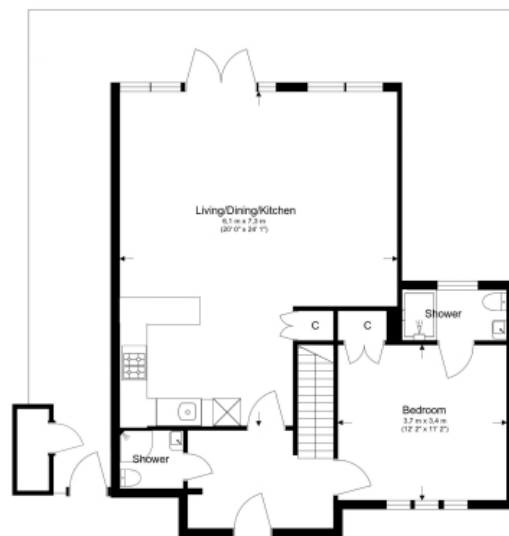
Benham & Reeves



Chancellor Road, Hammersmith, W6

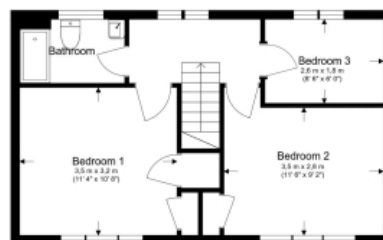
£970 per week, £4,203 per month + fees

www.benhams.com



Ground Floor

Total Gross Internal Area
106.5 Sq/m - 1,147 Sq/ft



First Floor

Floor Plan measurements are approximate and are for illustrative purposes only. While we do not doubt the floor plans accuracy, we make no guarantee, warranty or representation as to the accuracy and completeness of the floor plan.

Score	Energy rating	Current	Potential
92+	A		
81-91	B		
69-80	C		77 C
55-68	D	58 D	
39-54	E		
21-38	F		
1-20	G		

London branches open six days a week Mon - Sat

Canary Wharf | City | Colindale | Dartmouth Park | Ealing | Fulham
Hammersmith | Hampstead | Highgate | Hyde Park | Kensington | Kew
Knightsbridge | Nine Elms | Shoreditch | Southall | Surrey Quays
Wapping | Wembley | White City | Woolwich

International offices

China | Hong Kong SAR | India | Indonesia | Qatar | Malaysia | Middle East | Pakistan
Singapore | South Africa | Thailand | Turkey

