



Benham & Reeves

Parr's Way, Hammersmith, W6

£600 per week, £2,600 per month + fees

 1 Bedroom  1 Bathroom  Furnished

A modern 1st floor apartment, with excellent onsite resident facilities, situated in a riverside development close to the amenities of Hammersmith. Located within walking distance from Hammersmith underground station, (Piccadilly, Circle, District and Hammersmith and City line).

Please [click here](#) for full detail

Property features

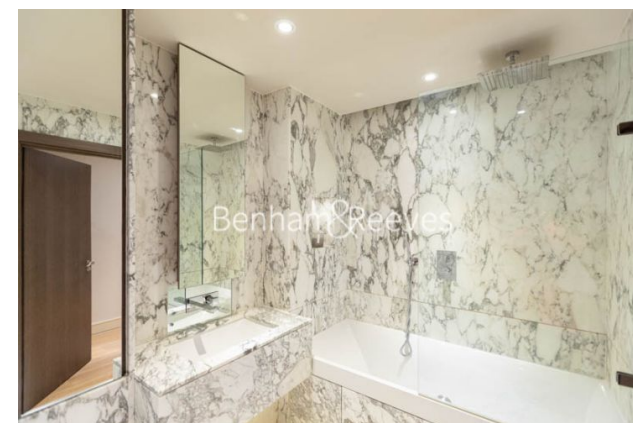
1 Double Bedroom with Built-in Wardrobes (1st Floor) | Very Bright & Spacious Reception Room | Internal Area: 545 Sq Ft Internally / Furnished | Step-away from Bus routes 9,23, 27,306,N9,N27 | Step-away from Piccadilly line, District line, Circle line, | EPC-B | Luxury Bathroom Features with Dark Brown Pearl Finish | Designable Fully Fitted Open Plan Kitchen with Well-Known | Multi-channel Underfloor Heating / Air Ventilation System | Nearby Hammersmith Underground Station

For more information about this property, please call our Hammersmith branch on

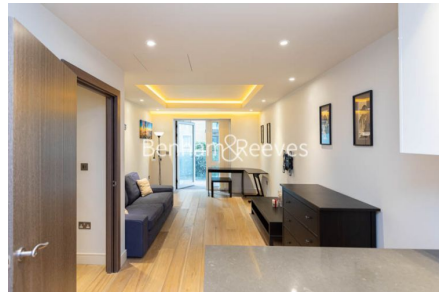
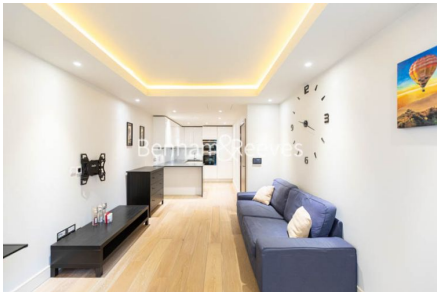
020 8600 0960

Redress & Client Money Protection :

Benham and Reeves are members of The Property Ombudsman redress scheme and have Client Money protection with ARLA Propertymark. You can find more information on our website at <https://www.benhams.com/membership/>



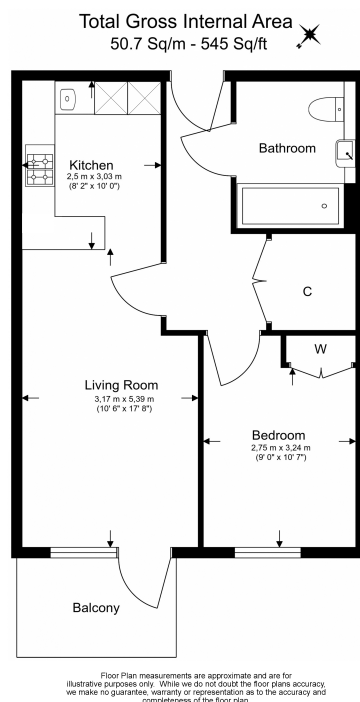
Benham & Reeves



Parr's Way, Hammersmith, W6

£600 per week, £2,600 per month + fees

www.benhams.com



Score	Energy rating	Current	Potential
92+	A		
81-91	B	84 B	84 B
69-80	C		
55-68	D		
39-54	E		
21-38	F		
1-20	G		

London branches open six days a week Mon - Sat

Canary Wharf | City | Colindale | Dartmouth Park | Ealing | Fulham
Hammersmith | Hampstead | Highgate | Hyde Park | Kensington | Kew
Knightsbridge | Nine Elms | Shoreditch | Southall | Surrey Quays
Wapping | Wembley | White City | Woolwich

International offices

China | Hong Kong SAR | India | Indonesia | Qatar | Malaysia | Middle East | Pakistan
Singapore | South Africa | Thailand | Turkey



Benham & Reeves