



Benham & Reeves

Sovereign Court, Hammersmith, W6

£750 per week, £3,250 per month + fees

 2 Bedrooms  2 Bathrooms  Furnished

A luxury 2nd floor air-conditioned apartment situated in a prestigious development in the heart of Hammersmith. The property is ideally located within walking distance to Hammersmith underground station, which is serviced by the Circle, District, Piccadilly and Hammersmith and City lines.

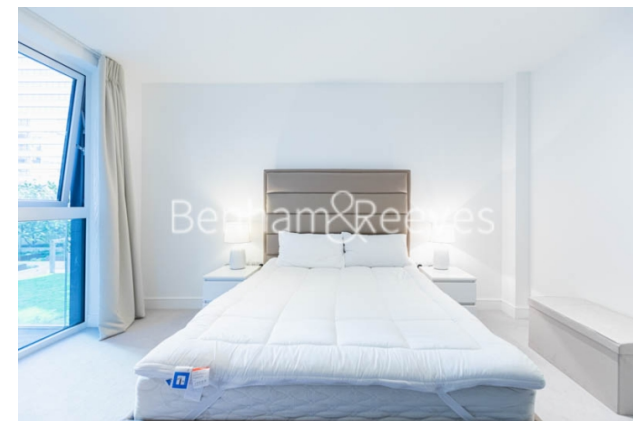
Please [click here](#) for full detail

Property features

2 bedroom 2 bathroom, furnished flat | Wood Floor throughout | Comfort Cooling, Wall heating and Underfloor heating | Wall Mounted TV / Large Private Terrace | 2 x Cream Stone Finish Luxury Bathroom | EPC-B | Contemporary Open-Plan Fitted Kitchen | 24 hr Concierge / Quality Residents' Gym | Very Sizeable Open-Plan Reception with Hardwood Floors | Moments from Hammersmith Underground Station & Local Buses

For more information about this property,
please call our Hammersmith branch on

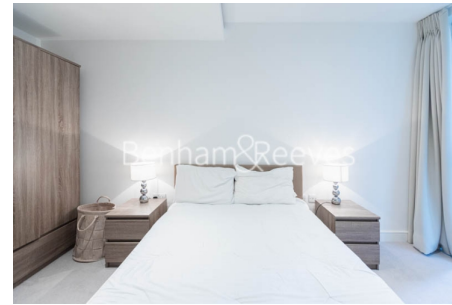
020 8600 0960



Redress & Client Money Protection :

Benham and Reeves are members of The Property Ombudsman redress scheme and have Client Money protection with ARLA Propertymark. You can find more information on our website at <https://www.benham.com/membership/>

Benham & Reeves



Sovereign Court, Hammersmith, W6

£750 per week, £3,250 per month + fees

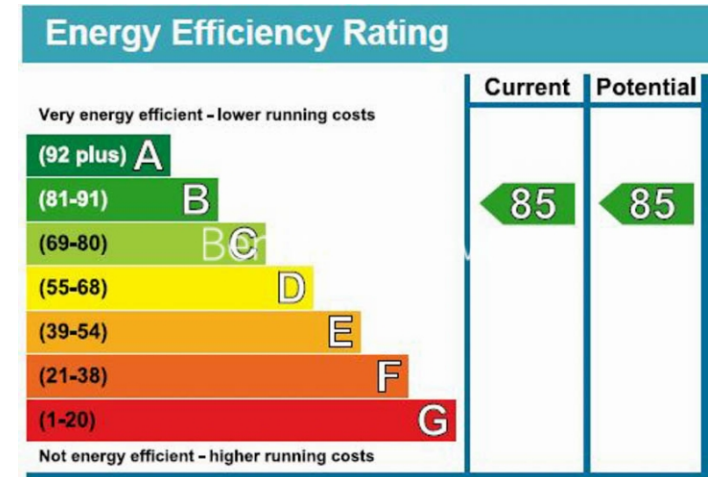
www.benhams.com

2nd Floor



LIVING/DINING	3.83m x 5.71m	12'7" x 18'9"
KITCHEN	2.73m x 2.50m	9'0" x 8'2"
BEDROOM 1	4.19m* x 4.43m*	13'9" x 14'6"*
BEDROOM 2	2.86m x 3.80m	9'5" x 12'6"

Whilst every attempt has been made to ensure the accuracy of the floor plan contained herein, measurements of doors, windows, rooms and any other items are approximate and no responsibility is taken for any error, omission, or mis-statement. This plan is for illustrative purposes only and should be used as such by any prospective purchaser. The services, systems and appliances shown have not been tested and no guarantee as to their operability or efficiency can be given.
Made with Metropix G2016



London branches open six days a week Mon - Sat

Canary Wharf | City | Colindale | Dartmouth Park | Ealing | Fulham
Hammersmith | Hampstead | Highgate | Hyde Park | Kensington | Kew
Knightsbridge | Nine Elms | Shoreditch | Southall | Surrey Quays
Wapping | Wembley | White City | Woolwich

International offices

China | Hong Kong SAR | India | Israel | Malaysia | Middle East | Pakistan
Qatar | Singapore | South Africa | Thailand | Turkey



Benham & Reeves