



Benham & Reeves

## **Parr's Way, Hammersmith, W6**

£1,200 per week, £5,200 per month + fees

 2 Bedrooms    2 Bathrooms    Furnished

A luxurious first floor apartment with superb resident amenities situated in a sought-after riverside development close to the amenities of Hammersmith. Within a short walking distance from Hammersmith Underground station (Circle, District, Piccadilly, and Hammersmith and City Lines).

Please [click here](#) for full detail

## Property features

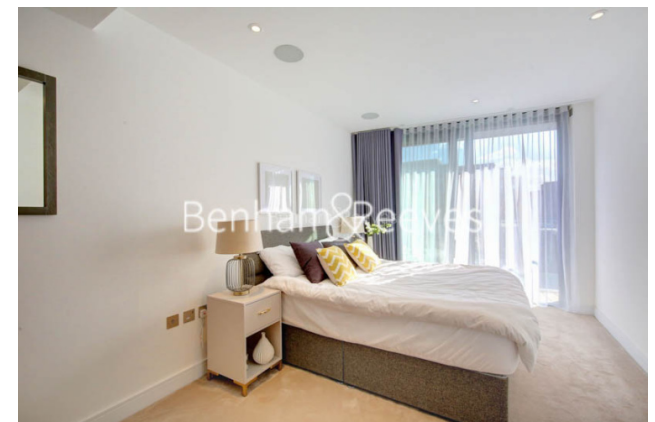
**2 Bedrooms | 2 Bathrooms | Reception | Furnished | Fitted Kitchen | EPC-B | Built-in wardrobe | Residents' gym/24-hour Concierge | Nearby Hammersmith Tube Station**

For more information about this property,  
please call our Hammersmith branch on

**020 8600 0960**

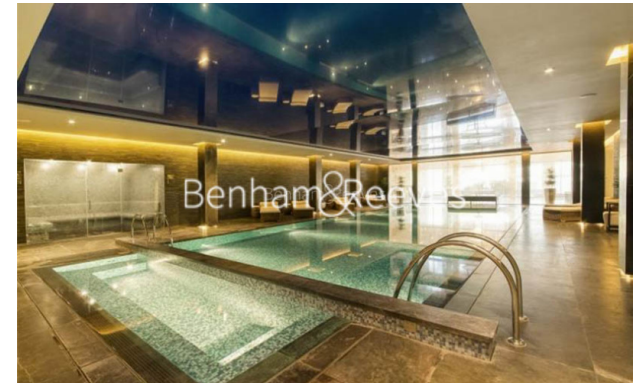
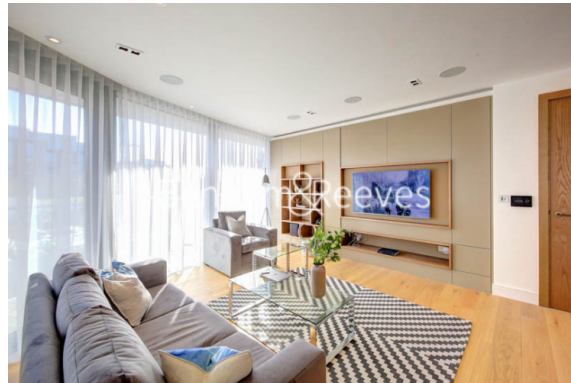
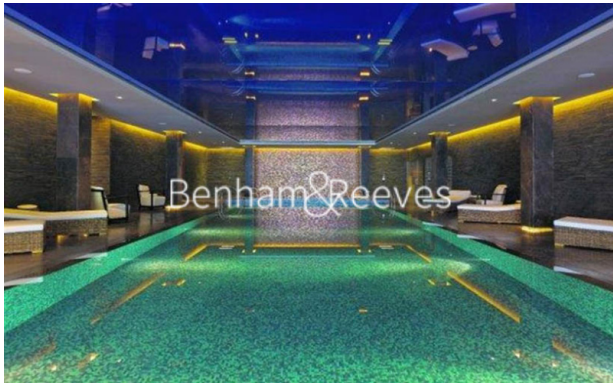
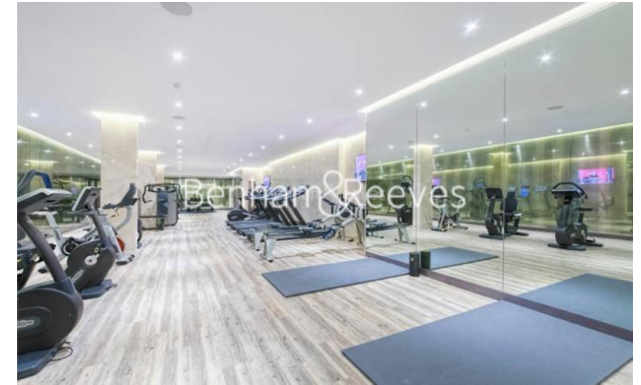
Redress & Client Money Protection :

Benham and Reeves are members of The Property Ombudsman redress scheme and have Client Money protection with ARLA Propertymark. You can find more information on our website at <https://www.benhams.com/membership/>



Benham & Reeves

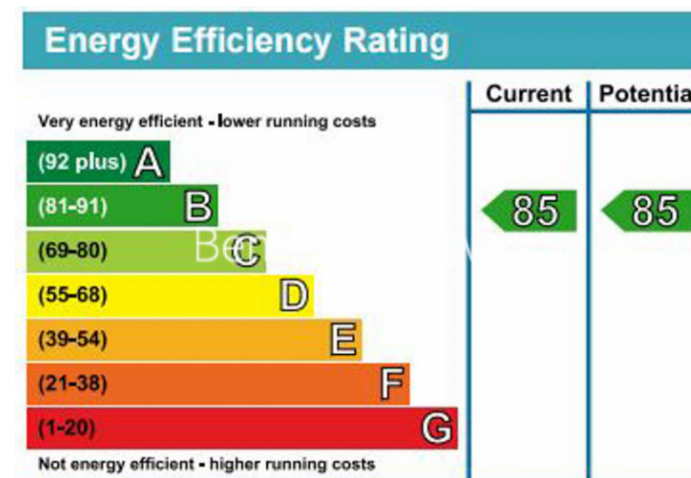
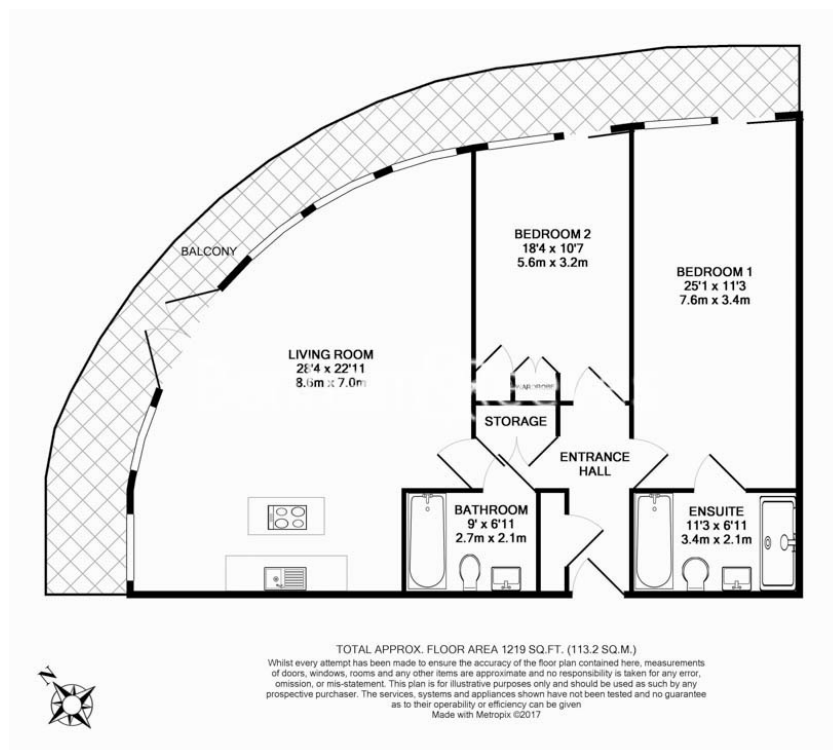




# Parr's Way, Hammersmith, W6

£1,200 per week, £5,200 per month + fees

www.benhams.com



## London branches open six days a week Mon - Sat

Canary Wharf | City | Colindale | Dartmouth Park | Ealing | Fulham  
Hammersmith | Hampstead | Highgate | Hyde Park | Kensington | Kew  
Knightsbridge | Nine Elms | Shoreditch | Southall | Surrey Quays  
Wapping | Wembley | White City | Woolwich

## International offices

China | Hong Kong SAR | India | Indonesia | Qatar | Malaysia | Middle East |  
Singapore | South Africa | Thailand | Turkey



Benham & Reeves